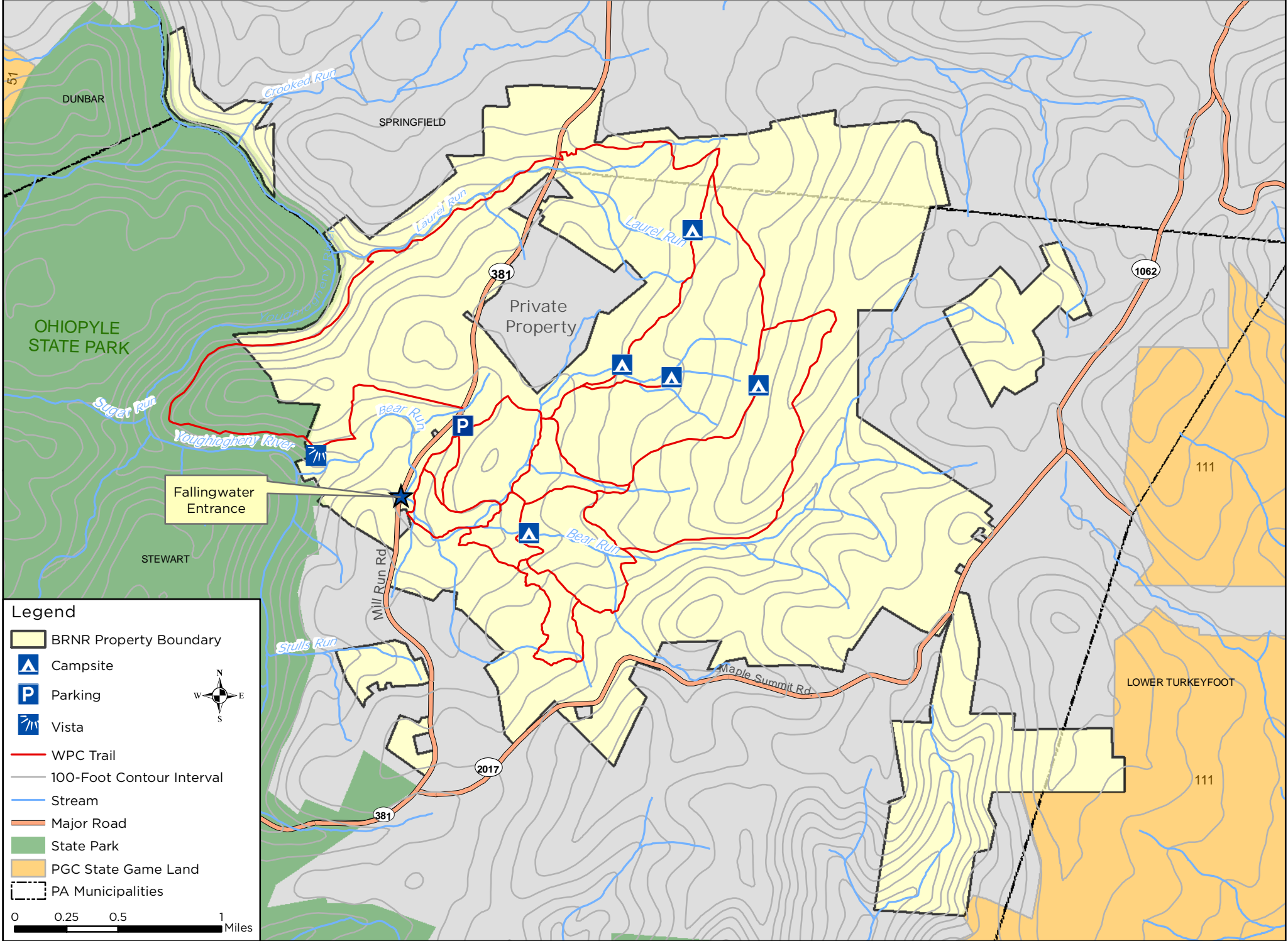


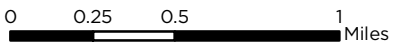
# Bear Run Nature Reserve (BRNR) Trail Map

39.905920, -79.459783; Mill Run Topo Quad



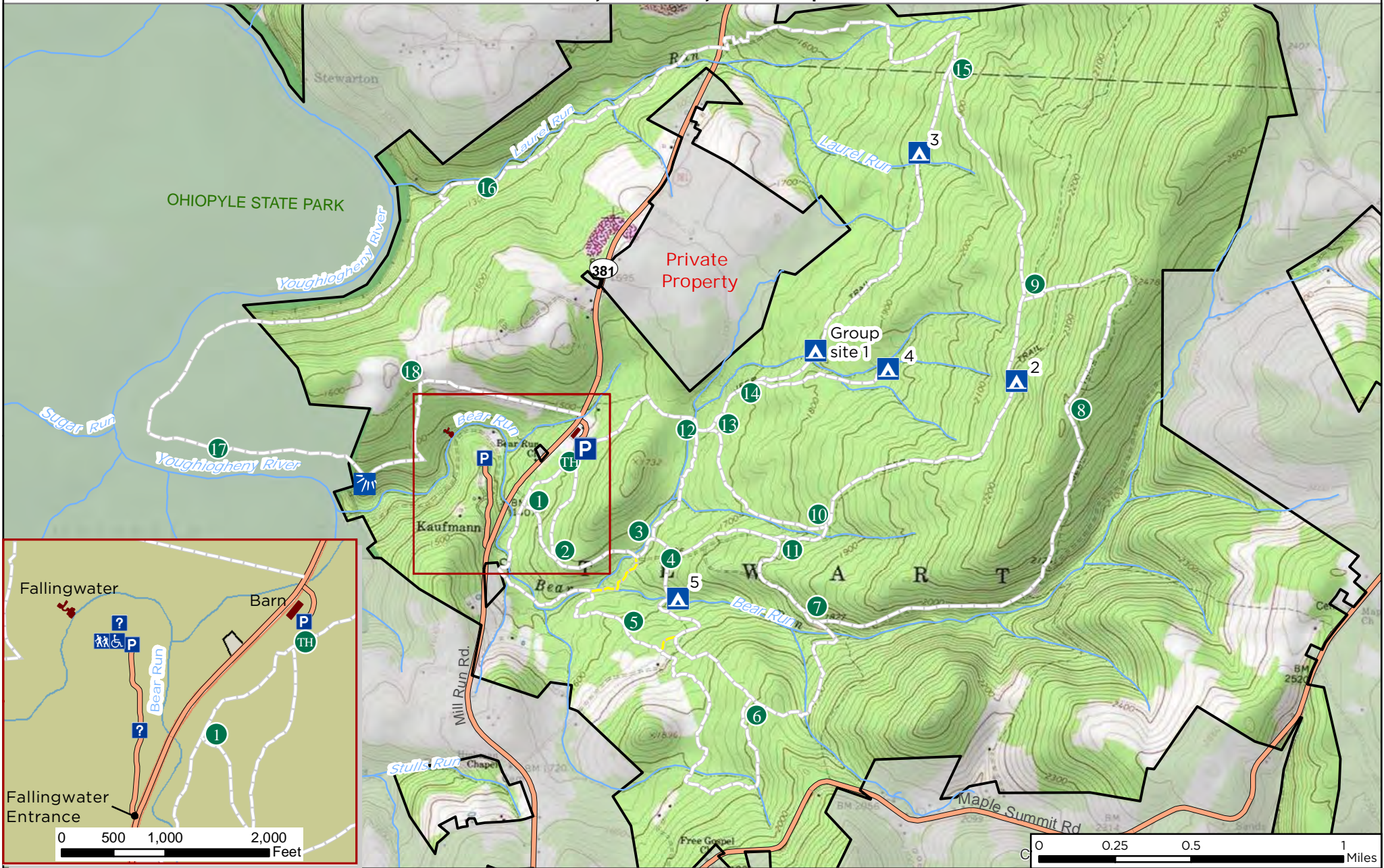
## Legend

- BRNR Property Boundary
- Campsite
- Parking
- Vista
- WPC Trail
- 100-Foot Contour Interval
- Stream
- Major Road
- State Park
- PGC State Game Land
- PA Municipalities



# Bear Run Nature Reserve (BRNR) Trail Map

39.905920, -79.459783; Mill Run Topo Quad



**Legend**

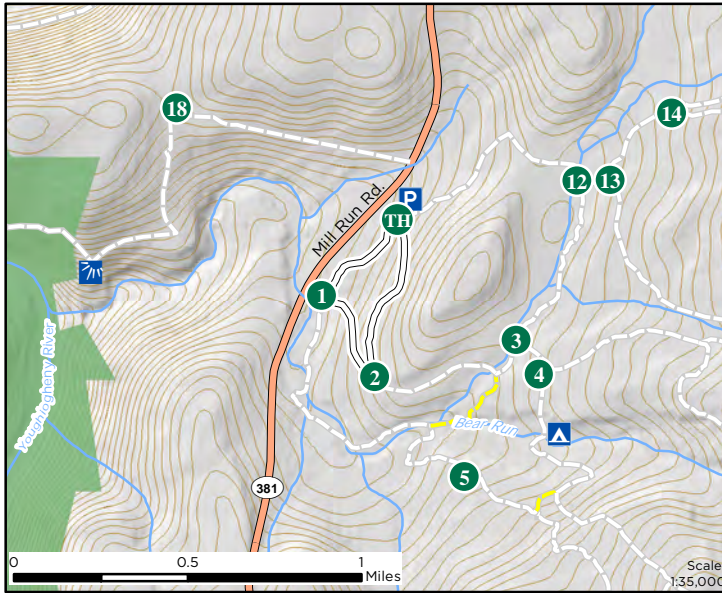
	BRNR Boundary		Campsite		Main Trail		Trailhead
	Property Boundary		Parking		Connecting Trail		Trail Marker
	State Park		Vista				
	Stream		Universal Access Trail				
			Information				

Property Features:

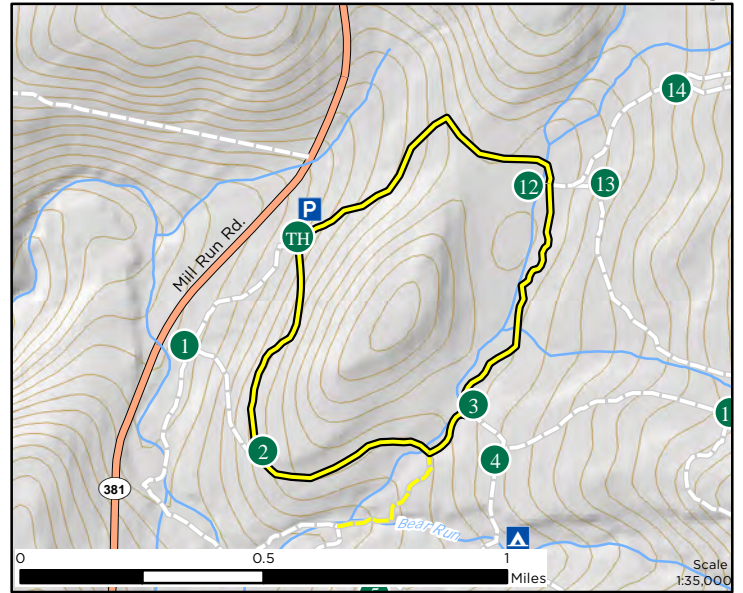
Property boundaries and trail locations are approximate. Map updated April 2016 by E. Ramsey

Trail Loops (All trails start and end at the Trailhead (TH)):							
Loop Name/Color	Trail marker #s to follow	Approximate Mileage/Time	Approximate Difficulty	Loop Name/Color	Trail marker #s to follow	Approximate Mileage/Time	Approximate Difficulty
White Loop	2,1	0.8/20min	Easy	Red Loop	1,5-7,11,4,3,12	5.1/2.5hrs	Moderate
Yellow Loop	12,3,2	1.8/40min	Easy	Blue Loop	12-15,9-11,4,3,2,1	5.7/3.5hrs	Difficult
Orange Loop	2-4,6,7,11,10,13,12	4.1/2hrs	Moderate	Black Loop	1,5-9,15-18	11.9/6.5hrs	Difficult

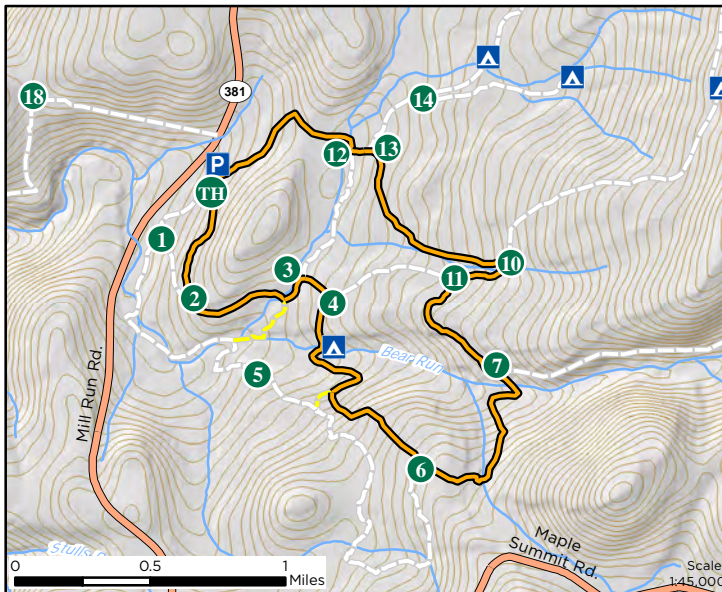
# Bear Run Nature Reserve (BRNR) Trail Loops



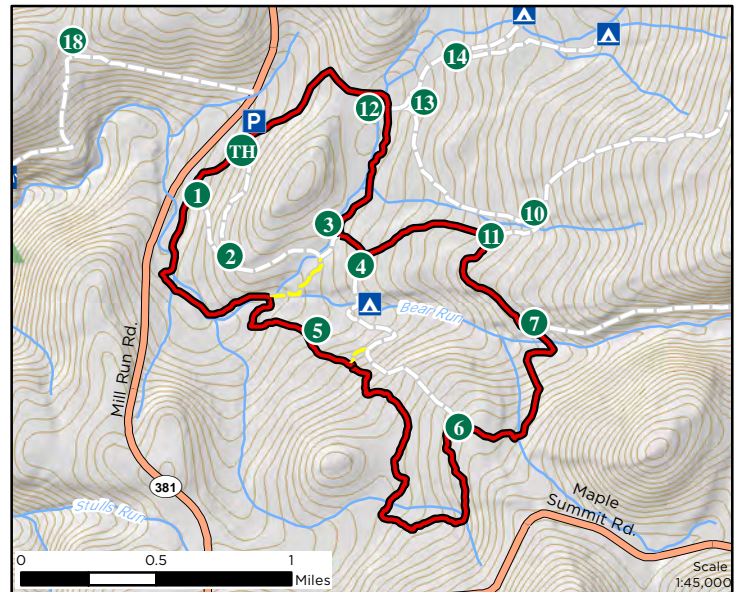
White Loop: follow TH,2,1 = approx. 0.8 miles/20 minutes



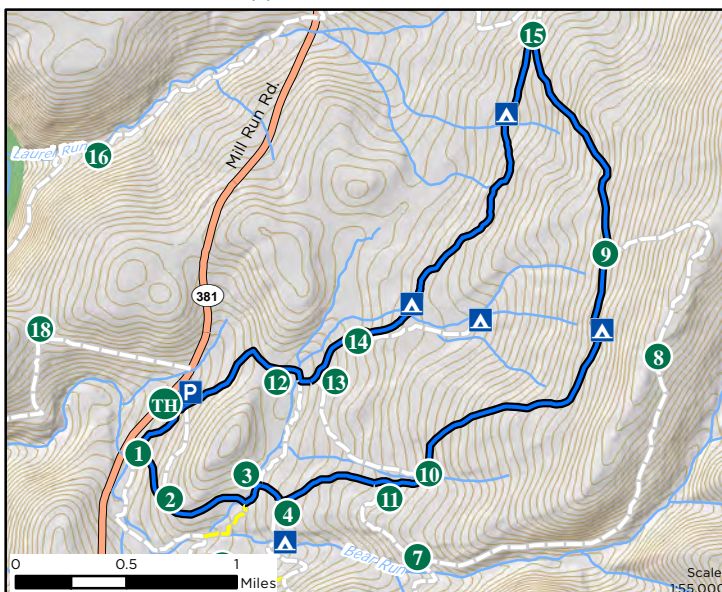
Yellow Loop: follow TH,12,3,2 = approx. 1.7 miles/40 minutes



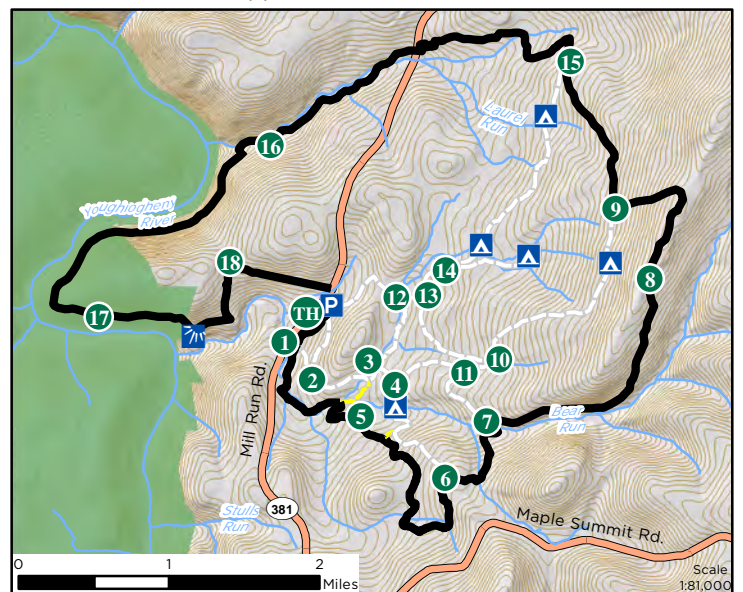
Orange Loop: follow TH, 2-4,6,7,11,10,13,12 = approx. 4.1 miles/2 hours



Red Loop: follow TH,1,5-7,11,4,3,12 = approx. 5.1 miles/2.5 hours



Blue Loop: follow TH,12-15,9-11,4,3,2,1 = approx. 5.7 miles/3.5 hours



Black Loop: follow TH,1,5-9,15-18 = approx. 11.9 miles/6.5 hours