

Location: Hayfield and Vernon townships,
Crawford County

Size: 552 acres

Dates acquired: 2012-2016

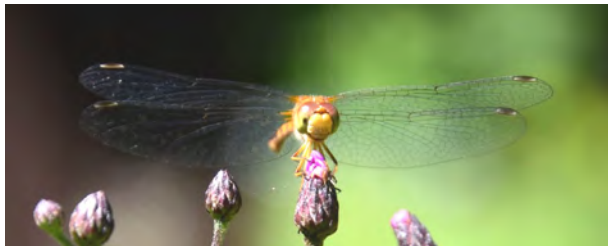
Notable features: Slow moving creek, hem-
lock forest, ponds, wetlands, old fields

**Recreational activities (see inside for
details):** Hiking, wildlife watching, hunting,
fishing

Directions: From I-79, take Exit 147B to US
-322 W/US-6 W. Travel 1.5 miles and turn
right onto PA-98 N. Travel 3.8 miles and turn
right onto Rogers Ferry Road. Travel 0.6 mile
and turn right into an old driveway entrance.

Parking also is available at two locations
along Rt. 98: an access road by a gas well
and a small gravel lot.

Description: The Katz Natural Area features
high-quality wetlands and floodplain along
the slow-moving, meandering Cussewago
Creek, a tributary to French Creek. Natural
communities include northern hardwood for-
est; and forested, scrub-shrub, and emer-
gent wetlands. There's a large hemlock for-
ested wetland. About 35 acres of former agri-
cultural fields are reverting to forest.



*For more information about Western
Pennsylvania Conservancy, please contact:*

Western Pennsylvania Conservancy
800 Waterfront Dr.
Pittsburgh, PA 15222

toll-free: 1-866-564-6972
fax: 412-231-1414
waterlandlife.org
info@paconserve.org



HELEN B. KATZ NATURAL AREA

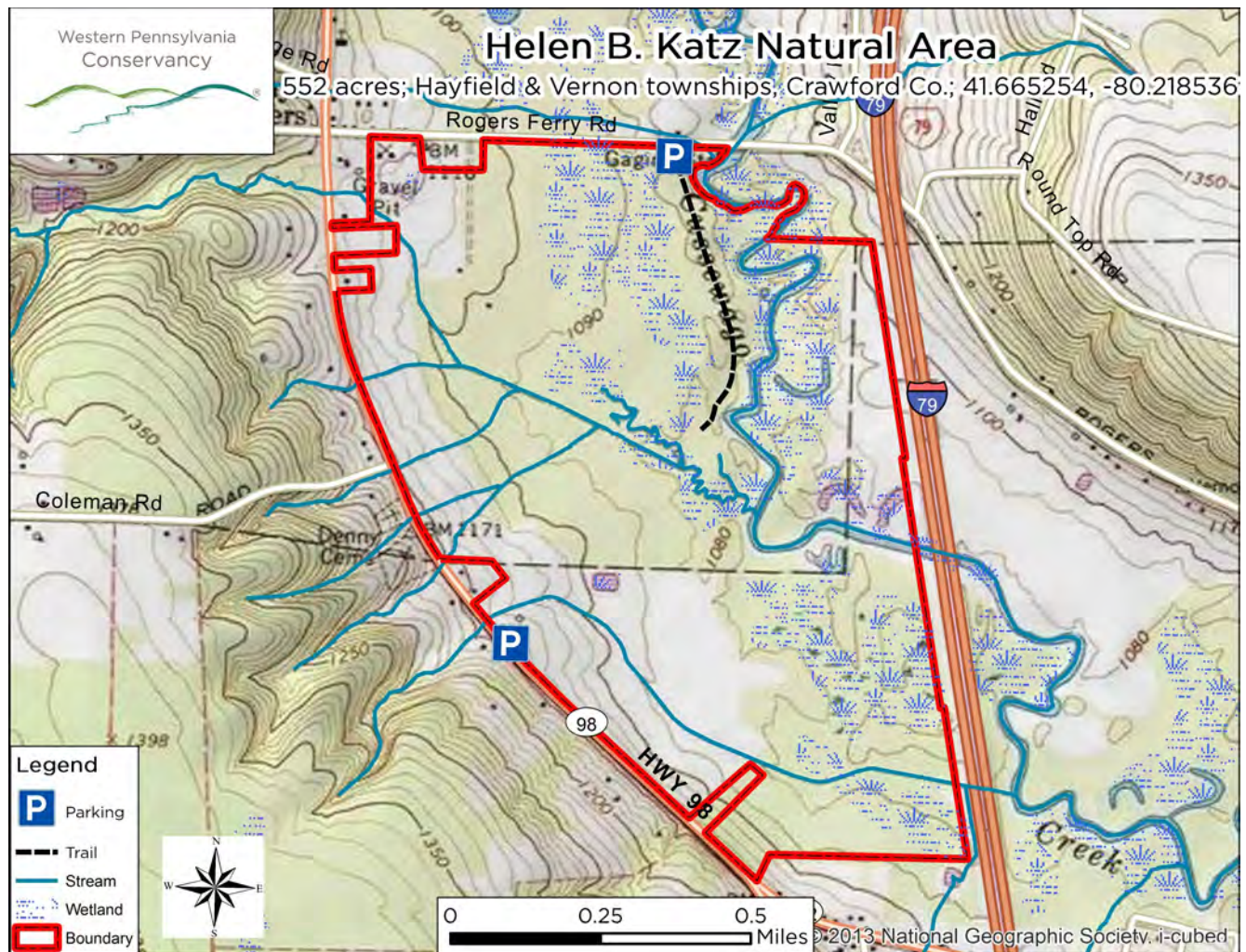




Recreational activities: From the parking area off Rogers Ferry Rd., a rustic **trail** travels south about 0.5 mile, ending at a manmade **pond**. The trail is level, but portions may be wet at certain times of the year.

The combination of floodplain, wetland, upland forest, and old field provide habitat for a diversity of **wildlife**. Wood ducks frequent the wetlands and Cussewago Creek. **There's also abundant beaver activity.** As part of an Audubon Society **Important Bird Area**, habitat exists for a variety of birds, including cerulean warbler, hooded warbler, marsh wren, green-winged teal, and pied-billed grebe.

Hunting and fishing are permitted in accordance with state regulations. Please exercise caution and wear blaze orange during hunting season.



This property is named in memory of Mrs. Helen Blockstein Katz, who bequeathed more than \$5 million to the Conservancy. **Thanks in part to her generosity, we've** conserved more than 4,300 acres of land for the protection of rare species and important natural communities.

Consistent with our goals of managing this property as a natural area, most of the residential structures were removed and more than 15 acres of trees were planted in former agricultural fields.

When visiting the Katz Natural Area, please remember:

- Only foot-traffic is permitted.
- Camping and campfires are prohibited.
- If you carry it in, carry it out.
- Dogs must be on a leash.
- Collecting (animals, plants, rocks, etc.) without permission is prohibited.
- Avoid disturbance of agricultural activities on the southern portion of the Natural Area.