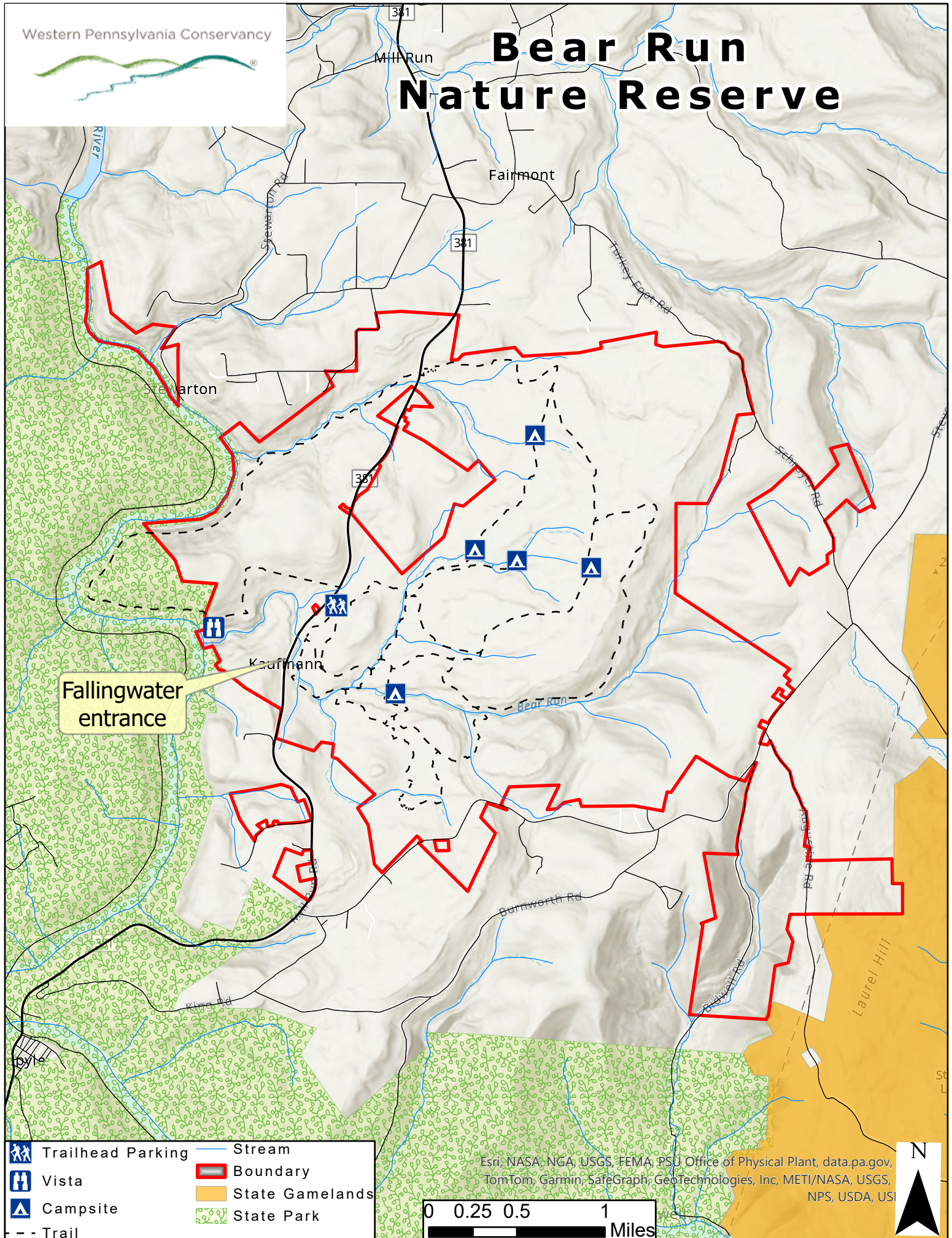


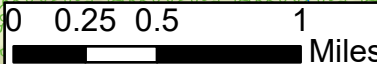


Bear Run Nature Reserve



Fallingwater entrance

-  Trailhead Parking
-  Vista
-  Campsite
-  Trail
-  Stream
-  Boundary
-  State Gamelands
-  State Park



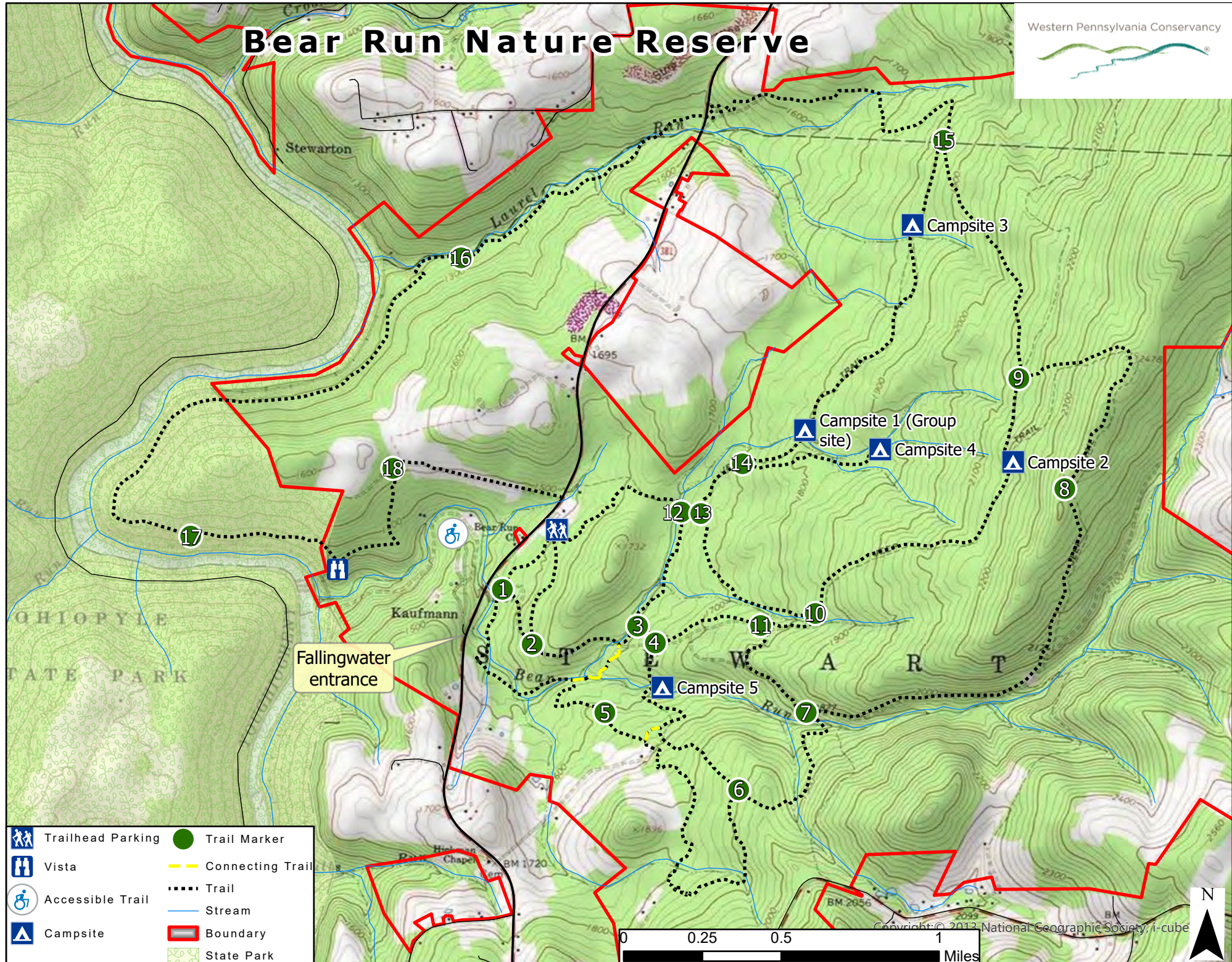
Esri, NASA, NGA, USGS, FEMA, PSU Office of Physical Plant, data.pa.gov, TomTom, Garmin, SafeGraph, GeoTechnologies, Inc, METI/NASA, USGS, NPS, USDA, US



Boundaries are graphic depictions, and should not be used in place of a survey.

Bear Run Nature Reserve

Western Pennsylvania Conservancy



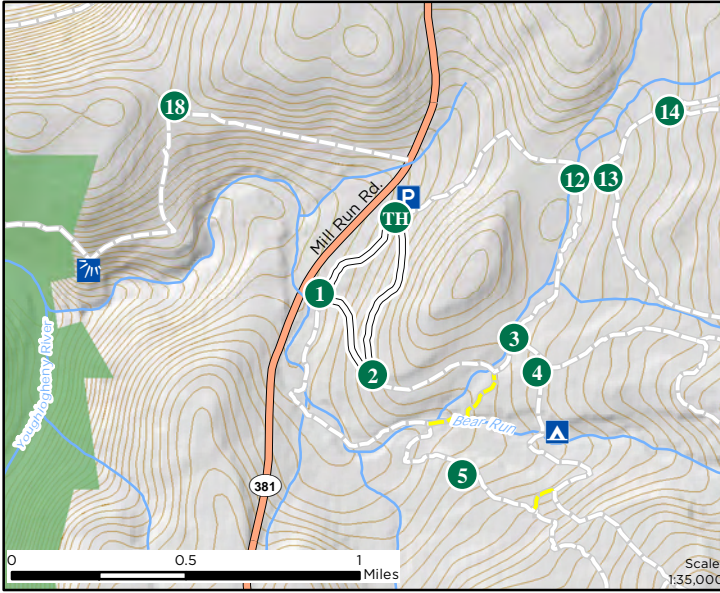
	Trailhead Parking		Trail Marker
	Vista		Connecting Trail
	Accessible Trail		Trail
	Campsite		Stream
			Boundary
			State Park

Boundaries are graphic depictions, and should not be used in place of a survey.

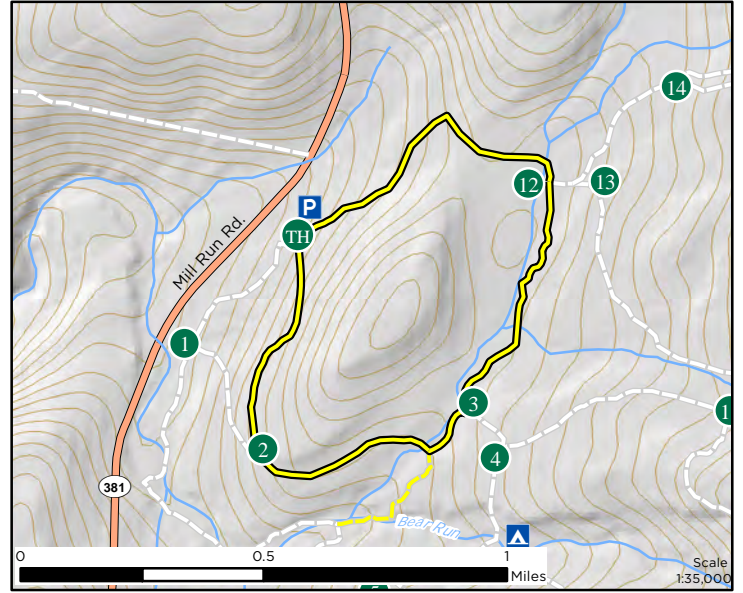
Map created Feb. 2025 by A. Zadnik, WPC

Copyright © 2013 National Geographic Society, i-cube

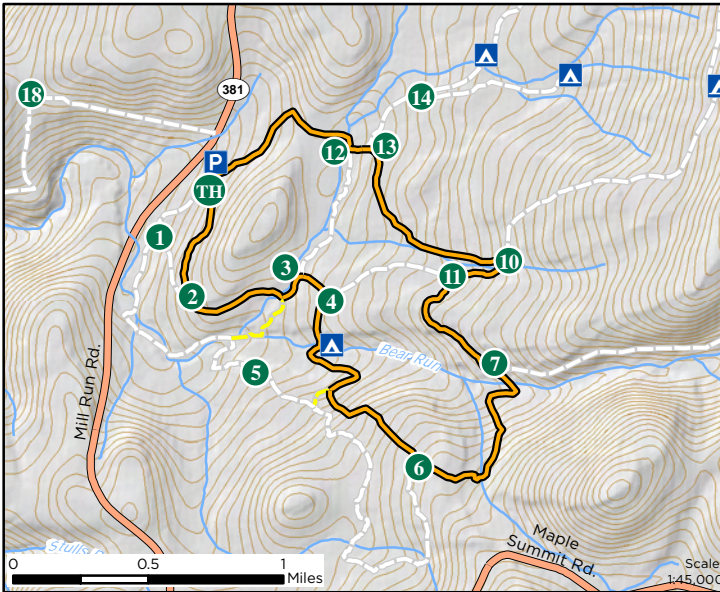
Bear Run Nature Reserve (BRNR) Trail Loops



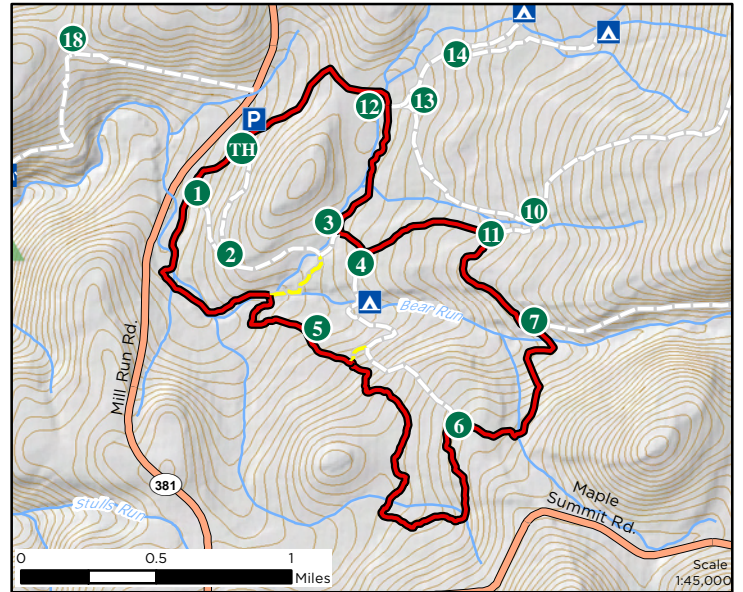
White Loop: follow TH,2,1 = approx. 0.8 miles/20 minutes



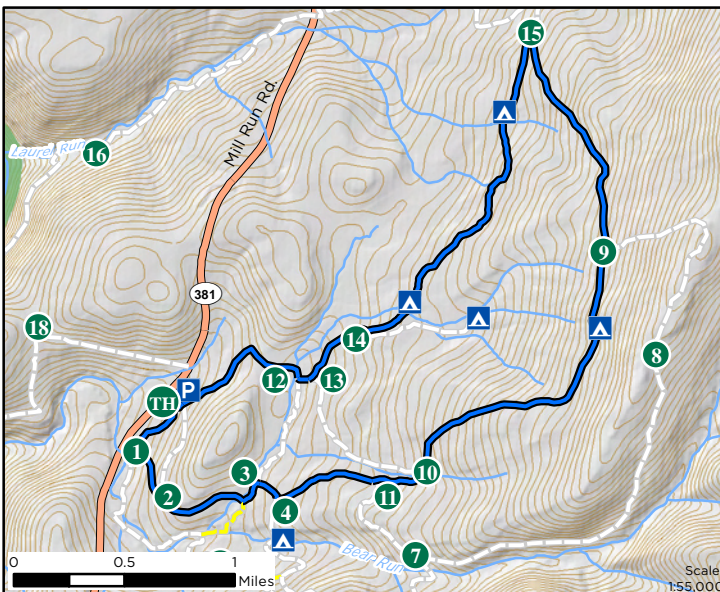
Yellow Loop: follow TH,12,3,2 = approx. 1.7 miles/40 minutes



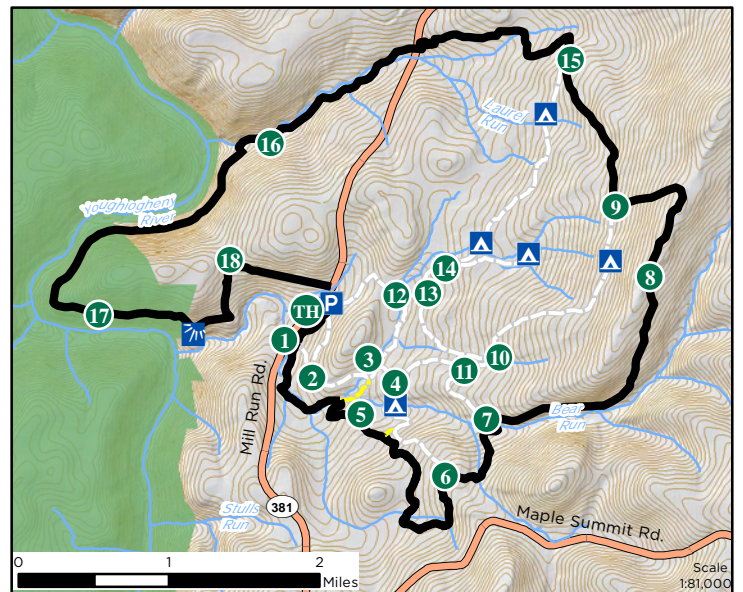
Orange Loop: follow TH, 2-4,6,7,11,10,13,12 = approx. 4.1 miles/2 hours



Red Loop: follow TH,1,5-7,11,4,3,12 = approx. 5.1 miles/2.5 hours



Blue Loop: follow TH,12-15,9-11,4,3,2,1 = approx. 5.7 miles/3.5 hours



Black Loop: follow TH,1,5-9,15-18 = approx. 11.9 miles/6.5 hours