

Location: Stewart Township and Springfield Township, Fayette County; Lower Turkeyfoot Township, Somerset County

Dates acquired: 1963 - 2024

Size: Approximately 5,162 acres

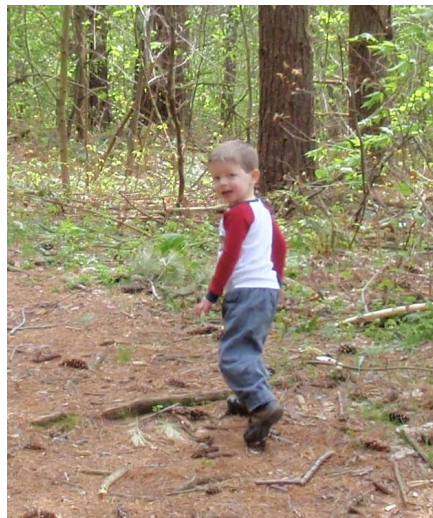
Notable features: Mature deciduous forest, hemlock forest, high gradient streams

Recreational activities (see inside for details): Hiking, wildlife watching, camping, hunting, fishing.

Directions: Bear Run Nature Reserve is located off PA Rt. 381, approximately 3 miles south of Mill Run, Fayette Co., PA.

Please note: Fallingwater, which is surrounded by Bear Run Nature Reserve, is accessible only from its entrance off Rt. 381, and requires an entrance fee.

Description: Bear Run Nature Reserve is the flagship property of the Western Pennsylvania Conservancy. Located on the western flank of Laurel Hill in the Laurel Highlands of southwestern Pennsylvania, the reserve offers hiking trails, backcountry campsites, and hunting and fishing opportunities. Bear Run Nature Reserve provides the setting for Fallingwater, the famous house designed for the Kaufmann family of Pittsburgh by architect Frank Lloyd Wright. Bear Run Nature Reserve is managed to protect, conserve, and restore land and water for the diversity of the region's native plants, animals, and their ecosystems. The reserve is integral to biodiversity conservation in the Laurel Highlands and the mid-Appalachian region.



BEAR RUN NATURE RESERVE

Kaufmann Conservation on Bear Run

For more information about Bear Run Nature Reserve, Fallingwater, and Western Pennsylvania Conservancy, please contact:

Western Pennsylvania Conservancy
P. O. Box R
Mill Run, PA 15464

724-329-8501
info@paconserve.org
WaterLandLife.org





Hiking: The main trailhead is located at the upper parking lot. From there, over 20 miles of trails take hikers to various corners of the Reserve.

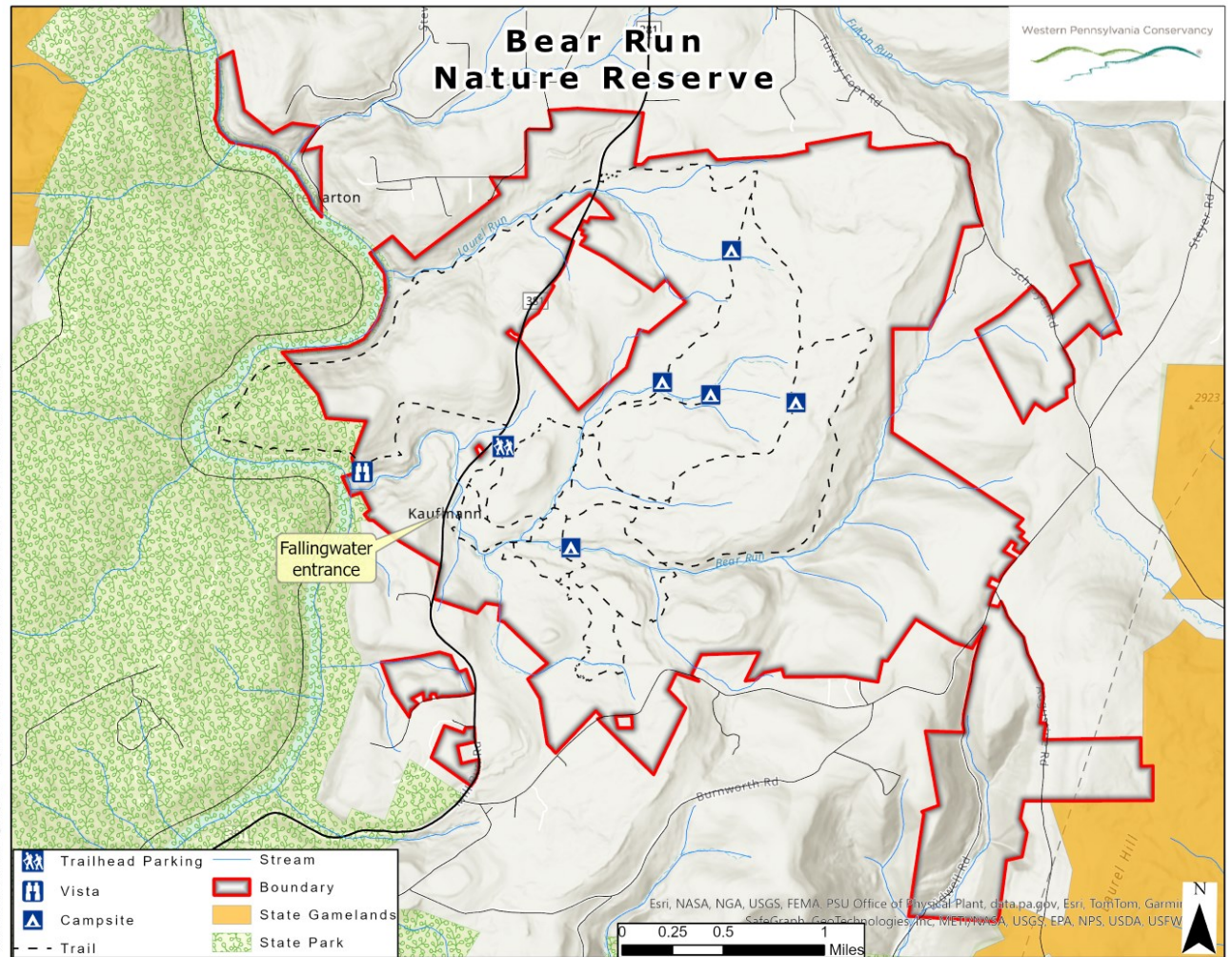
Wildlife and plants: Bear Run Nature Reserve provides habitat for a diversity of forest-dwelling wildlife, including black bear, fisher, bobcat, and over 53 breeding bird species.

Over 500 plant species have been found on the reserve. Dominant trees include tulip tree, red maple, chestnut oak, American beech, sugar maple, and black cherry.

Camping: Backcountry camping is permitted at a limited number of primitive campsites. Campsites must be reserved online through the WPC website.

Hunting and fishing: Hunting is permitted with a free permit downloaded from the WPC website. Trapping is not permitted. Fishing is permitted with the exception of the reach of Bear Run from the Rt. 381 bridge downstream to the Youghiogheny River.

Boundaries are graphic depictions, and should not be used in place of a survey.



When visiting Bear Run Reserve, please remember:

- Dogs must be on a leash or otherwise kept under control at all times.
- All vehicles (4WD, ATVs, mountain bikes, etc.) are prohibited.
- Campfires are permitted only at designated campsites. Only dead and downed tree limbs may be used for firewood. Firewood may not be brought in from offsite, or removed from the Reserve.

- Dumping and littering is prohibited.
- Collecting (animals, plants, rocks, etc.) is prohibited.
- Horseback riding is restricted to immediate neighbors only with a permit.

