

Location: Slippery Rock Township and Worth Township, Butler County

Size: 243 acres

Dates acquired: 1979-2015

Notable features: Mature forest, Wolf Creek floodplain and streambank, spring wildflowers, vernal pools, old fields

Recreational activities (see inside for details): Hiking, wildlife watching, hunting, fishing

Directions: From the Slippery Rock exit off I-79, go east on Rt. 108 to Slippery Rock. At the light in town, turn left on Rt. 258. Go one block, turn left on W. Water St., and follow it for approx. 1.2 miles (W. Water St. becomes Miller Rd.) to the upper parking area and trailhead on the right. To reach the lower parking area, continue on Miller Rd. for another 0.5 mile to a metal bridge. Cross the bridge and turn left into a small parking area. Walk back across the bridge, and the trailhead is on the left. **Please use caution and watch for traffic along the road.**

Please note: The lower parking area is located on the Miller Woods tract, owned and managed by Slippery Rock University.

The southern parcel of the preserve (downstream) is accessible only from the creek.

Description: Wolf Creek Narrows Natural Area is particularly known for its spectacular display of spring wildflowers. An active floodplain, mature northern hardwood forest, and scenic cliffs make this one of WPC's most popular preserves.



For more information about Western Pennsylvania Conservancy, please contact:

Western Pennsylvania Conservancy
800 Waterfront Dr.
Pittsburgh, PA 15222

toll-free: 1-866-564-6972
fax: 412-231-1414
waterlandlife.org
info@paconserve.org



WOLF CREEK NARROWS NATURAL AREA



Western Pennsylvania
Conservancy

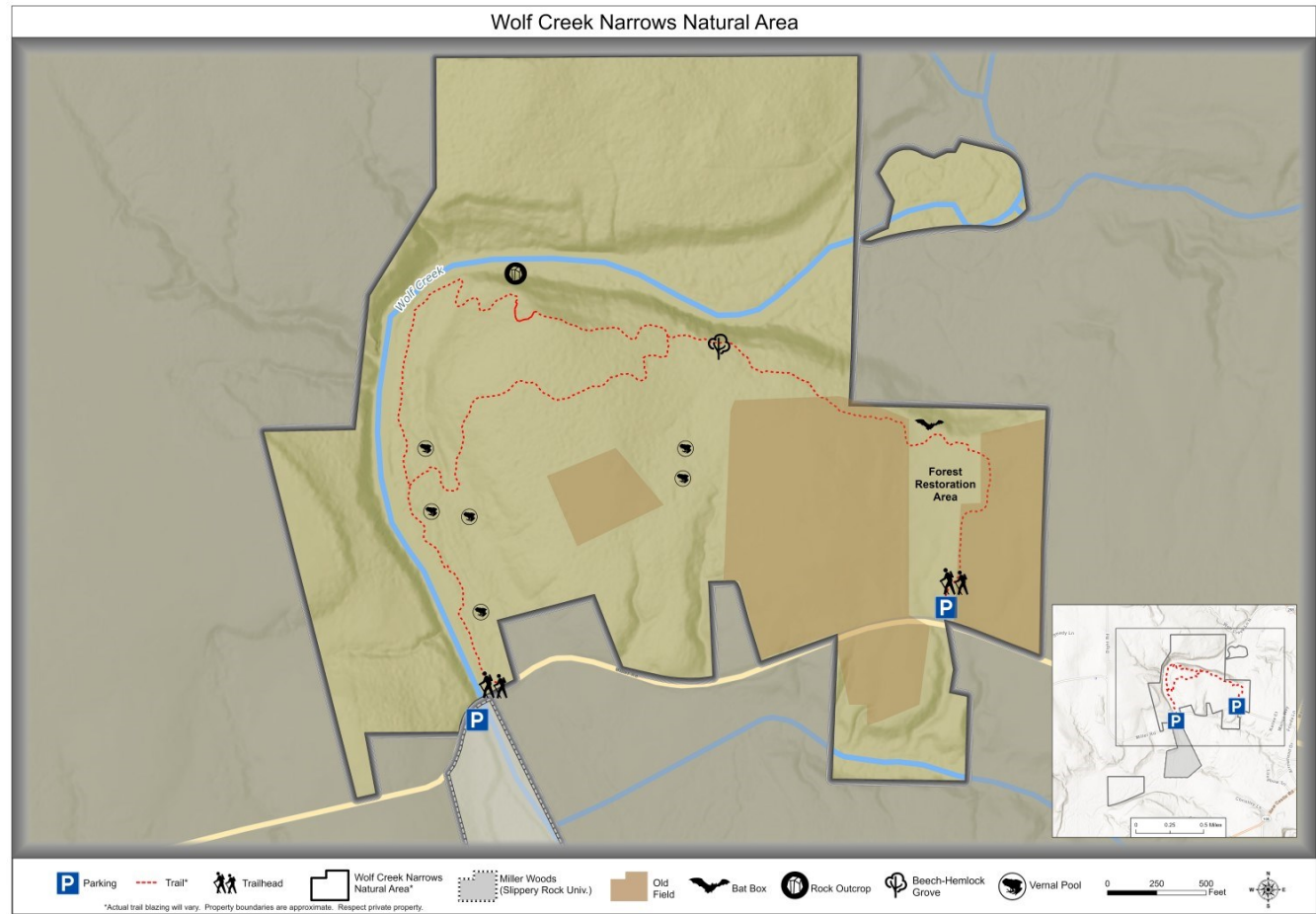
waterlandlife.org



Recreational activities: Wolf Creek Narrows Natural Area features **2.35 miles of hiking trail** (round-trip, includes a loop). The section from the lower trailhead (nearest the bridge) along the floodplain is rich with wildflowers in the spring. The trail then traverses slopes covered by a mature northern hardwood forest. From the upper parking area, another trail cuts through fields of grasses and wildflowers, a riparian forest restoration area, and a mature upland forest before connecting with the upper section of the trail loop. The trail system is **moderately-difficult**, but suitable for families with children.

The mixture of riparian and upland communities provides habitat for a variety of **wildlife**. Birds include belted kingfisher, Louisiana waterthrush, wood thrush, and the occasional osprey and bald eagle. Small, isolated pools of water provide breeding habitat for amphibians. Abundant logs on the forest floor offer cover for salamanders and snakes.

Hunting and fishing are permitted, though hunting is prohibited on Sundays. Please exercise caution and wear blaze orange during hunting season. Trapping is not permitted on WPC preserves.



It is believed that the steep, narrow gorge of Wolf Creek Narrows originally formed when the ceiling of an ice-age cave eroded and collapsed due to runoff from the melting glacier. The site now consists of a high-quality stream meandering through towering 50-foot cliffs. These natural processes, including annual flooding and ice-scouring, as well as limited human activities, have resulted in diverse natural communities.

When visiting Wolf Creek Narrows, please remember:

- Only foot-traffic is permitted.
- Camping and campfires are prohibited.
- If you carry it in, carry it out.
- Dogs must be on a leash or otherwise kept under control at all times.
- Collecting (animals, plants, rocks, etc.) without permission is prohibited.