

Location: Jay Township, Elk County; Huston Township, Clearfield County

Size: 1,465 acres

Dates acquired: 2008-2012

Notable features: Oak/northern hardwood forest, groves of eastern hemlock, Cherry Run

Recreational activities (see inside for details): Hiking, mountain biking, wildlife watching, hunting, backcountry camping, fishing, canoeing/kayaking

Directions: From I-80 in DuBois, exit at Rt. 255N. Travel north to the village of Hollywood. Turn left onto 5-Points Rd. (Hollywood Rd.), and travel to the first gated road on the right.

The property also can be accessed at the end of Pine Ave., just outside the village of Force.

Description: Bennett Branch Forest is located within the headwaters of the Susquehanna River, which flows into the Chesapeake Bay. The property contributes to a larger forested landscape known for its wildlife and forest biodiversity. Bennett Branch Forest provides water quality protection and opportunities for low-impact recreation. In addition to implementing sustainable forestry practices, WPC is working to restore areas impacted by past coal mining activities.



For more information about Western Pennsylvania Conservancy, please contact:

Western Pennsylvania Conservancy
Allegheny Regional Office
159 Main St.
Ridgway, PA 15853
814-776-1114

Headquarters—Pittsburgh Office
800 Waterfront Dr.
Pittsburgh, PA 15222
toll-free: 1-866-564-6972

waterlandlife.org
info@paconserve.org



BENNETT BRANCH FOREST



Western Pennsylvania
Conservancy



January 2025

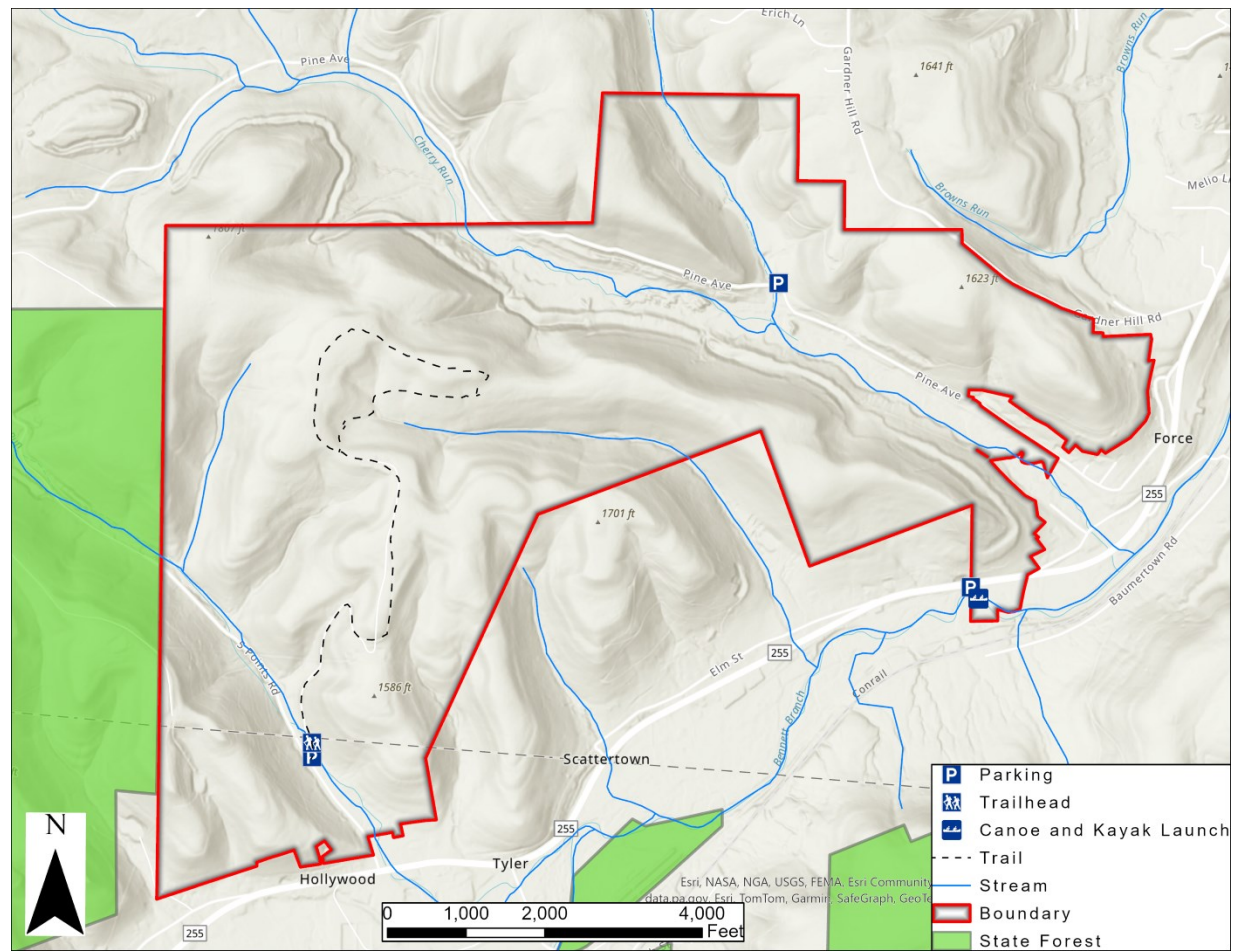


Recreational activities: From the parking area off 5-Points Rd. (Hollywood Rd.), a **hiking and biking trail** leads into the forest. The first 1/2 mile is very steep. Sturdy footwear is recommended.

Backcountry camping is permitted throughout the forest, though campfires are not allowed.

Near the village of Force, an access site has been developed for **fishing** and **paddling** in the Bennett Branch of Sinnemahoning Creek.

Hunting is permitted except on Sundays. Trapping is prohibited. Please exercise caution and wear blaze orange during hunting season.



As part of WPC 's original acquisition, approx. 3,800 acres were transferred to the Bureau of Forestry as an addition to Moshannon State Forest.

Management activities at Bennett Branch Forest include sustainable timber harvest, forest restoration (including the introduction of experimental American chestnut) on reclaimed strip mine, and construction of a system to treat abandoned mine drainage (AMD).

When visiting Bennett Branch Forest, please remember:

- Motorized vehicles are prohibited.
- Bicycles are permitted on designated trails only.
- Trapping is prohibited.
- All hunting is prohibited on Sundays.
- Dumping/littering is prohibited.
- Dogs must be on a leash or under control.
- Collecting (animals, plants, rocks, etc.) without permission is prohibited.
- Certain areas may be off-limits during timber harvest activities.