

Location: Hayfield and Vernon townships,
Crawford County

Size: 552 acres

Dates acquired: 2012-2016

Notable features: Slow moving creek, hem-
lock forest, ponds, wetlands, old fields

**Recreational activities (see inside for
details):** Hiking, wildlife watching, hunting,
fishing

Directions: From I-79, take Exit 147B to US
-322 W/US-6 W. Travel 1.5 miles and turn
right onto PA-98 N. Travel 3.8 miles and turn
right onto Rogers Ferry Road. Travel 0.6 mile
and turn right into the parking lot.

Parking also is available in a small gravel lot
along Rt. 98.

Description: Helen B. Katz Natural Area fea-
tures high-quality wetlands and floodplain
along the slow-moving, meandering Cussew-
ago Creek, a tributary to French Creek. Natu-
ral communities include northern hardwood
forest; and forested, scrub-shrub, and emer-
gent wetlands. There's a large hemlock for-
ested wetland. Former agricultural fields are
reverting to forest and wetlands.



HELEN B. KATZ

NATURAL AREA

*For more information about Western
Pennsylvania Conservancy, please contact:*

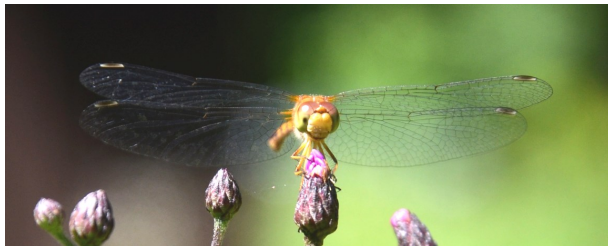
Western Pennsylvania Conservancy
Northwest Regional Office
814-346-0377; northwest@paconserve.org

Western Pennsylvania Conservancy
800 Waterfront Dr.
Pittsburgh, PA 15222

866-564-6972
waterlandlife.org



January 2025

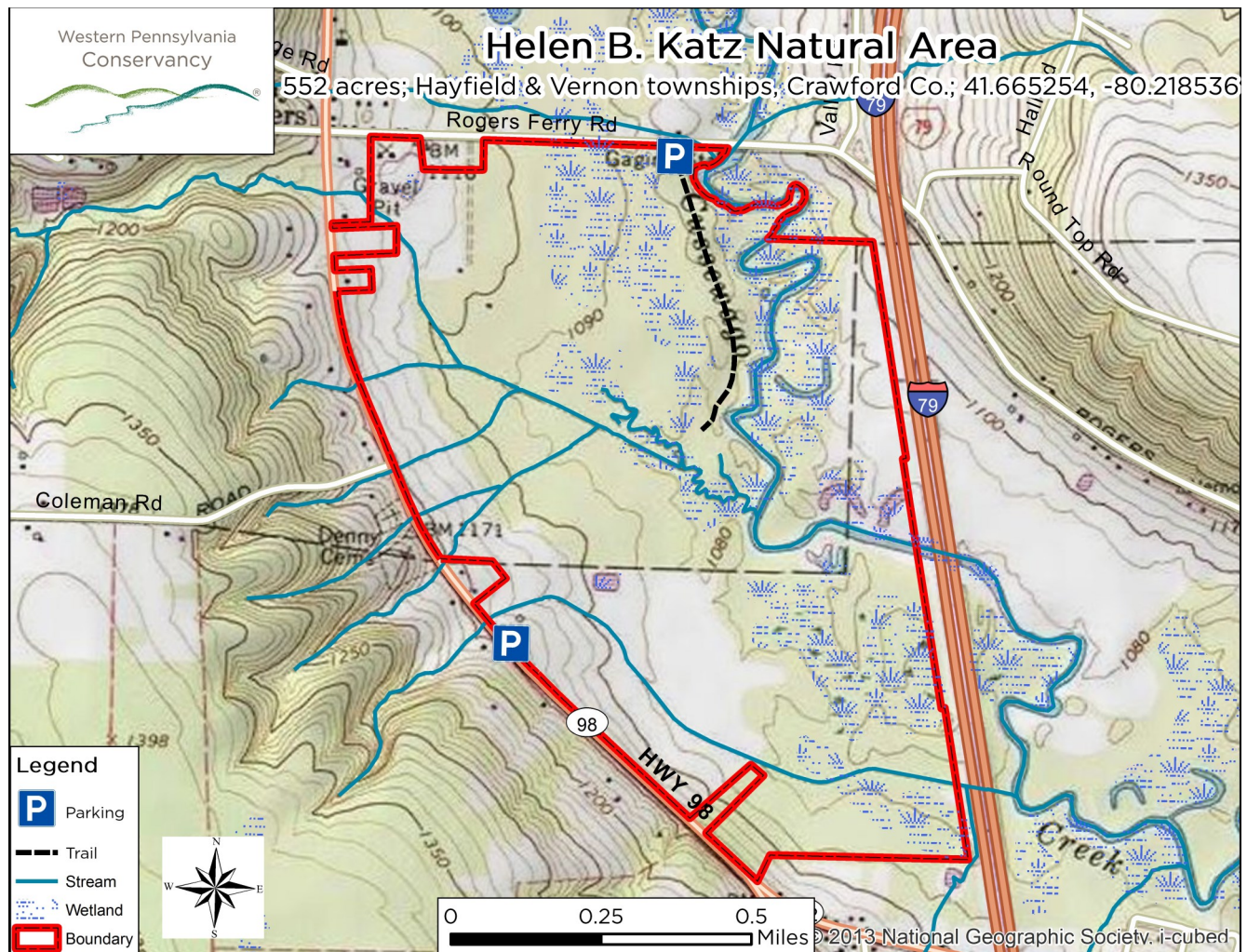




Recreational activities: From the parking area off Rogers Ferry Rd., a **trail** passes a picnic **pavilion** and travels south about 0.5 mile, ending at a constructed **pond**. The trail is level, but portions may be wet at certain times of the year.

The combination of floodplain, wetland, upland forest, and old field provide habitat for a diversity of **wildlife**. Wood ducks frequent the wetlands and Cussewago Creek. There's also abundant beaver activity. As part of an Audubon Society **Important Bird Area**, habitat exists for a variety of birds, including cerulean warbler, hooded warbler, marsh wren, green-winged teal, and pied-billed grebe.

Hunting and fishing are permitted, though hunting is not allowed on Sundays. Please exercise caution and wear blaze orange during hunting season. Trapping is not permitted.



This property is named in memory of Mrs. Helen Blockstein Katz, who bequeathed more than \$5 million to the Conservancy. Thanks in part to her generosity, we've conserved more than 4,300 acres of land for the protection of rare species and important natural communities.

Consistent with our goals of managing this property as a natural area, over 40 acres of former agricultural fields are being restored to wetland and forest. A 3/4-acre wildflower meadow was planted by the parking area along Rt. 98.

When visiting the preserve, please remember:

- Only foot-traffic is permitted.
- Camping and campfires are prohibited.
- If you carry it in, carry it out.
- Dogs must be on a leash or under control at all times.
- Collecting (animals, plants, rocks, etc.) without permission is prohibited.
- Hunting is not permitted on Sundays.