

**Location:** Heath Township, Jefferson County

**Size:** 630 acres

**Dates acquired:** 1996-2022

**Notable features:** Steep forested slopes, mountain laurel and rhododendron thickets, hemlock wetland, rock outcrops, Clarion River frontage

**Recreational activities (see inside for details):** Hiking, wildlife watching, hunting

**Directions:** Take Interstate 79 to Interstate 80, and head east. Continue on I-80 through Clarion to the exit for Route 949. Exit there, and follow Rt. 949 north, towards the town of Sigel. Continue on Route 949 through Sigel and into Clear Creek State Park/State Forest. Pass the Heath Pump Station on the right. Once past the pump station, continue 1.3 miles to an area called Dutch Hill and turn left onto Hiding Road (labeled Church Rd. on some maps; T308). Continue down Hiding Road to the end of the maintained section. The parking area and trailhead are on the right.

**Description:** Dutch Hill Forest supports diverse forest communities and varying terrain within the scenic Clarion River valley. The property consists of a gently sloping plateau dropping steeply east and north towards the river. Extensive thickets of rhododendron and mountain laurel are located along these slopes, as well as large boulders and interesting rock outcrops. A unique hemlock wetland forest close to the southern border forms the headwaters of two small streams.



*For more information about Western Pennsylvania Conservancy, please contact:*

Western Pennsylvania Conservancy  
Northwest Regional Office  
814-346-0377; northwest@paconserve.org

Western Pennsylvania Conservancy  
800 Waterfront Dr.  
Pittsburgh, PA 15222

866-564-6972  
waterlandlife.org  
info@paconserve.org



## DUTCH HILL FOREST



Western Pennsylvania  
Conservancy



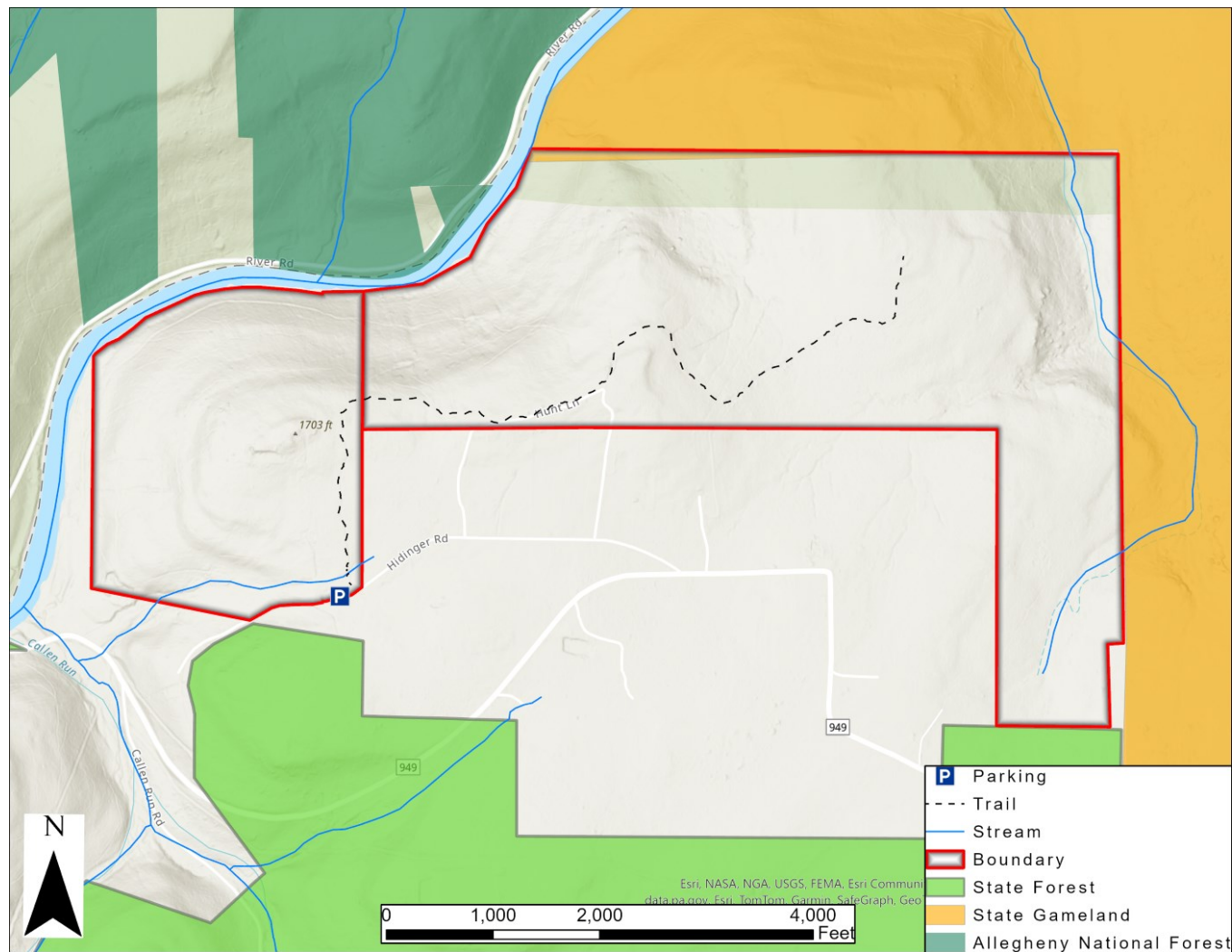
January 2025



**Recreational activities:** A 3.4-mile **trail** (round-trip distance, out-and-back) begins at the parking area, follows along the top of the plateau, and skirts the edge of the hemlock forested wetland before ending at an active gas well (do not disturb the well). Hikers should wear blaze orange or other bright colors during hunting season.

Backcountry **camping** is permitted. Backpacking stoves may be used, but open fires are not allowed. Leave No Trace principles should be followed.

Deer **hunting** is encouraged as a tool to improve forest diversity. Only portable tree stands are permitted, which must be removed at the end of the season. Hunting is not permitted on Sundays. Please exercise caution and wear blaze orange during hunting season.



Western Pennsylvania Conservancy's acquisition of Dutch Hill Forest is part of a long history of land conservation along the Clarion River. Since 1977, **the Conservancy has protected over 12,276 acres in the region**, leading in part to the development of state game lands, Clear Creek and Cook Forest state parks, and Allegheny National Forest. In 1996, 51.7 miles of the Clarion were designated a component of the federal Wild and Scenic Rivers System.

When visiting Dutch Hill Forest, please remember:

- Only foot-traffic is permitted.
- If you carry it in, carry it out.
- Hunting is not permitted on Sundays.
- Trapping is prohibited.
- Dogs must be on a leash or otherwise kept under control at all times.
- Collecting (animals, plants, rocks, etc.) without permission is prohibited.