

**Location:** Venango, Green and Waterford townships, Erie County, PA.

**Size:** Approx. 582 acres

**Dates acquired:** 1990-2012

**Notable features:** Natural lake, wetlands, old fields

**Recreational activities (see inside for details):** Non-motorized boating, fishing, hunting, wildlife watching

**Directions:** Located approximately 8 miles south of the City of Erie and I-90. Follow Lake Pleasant Road to the intersection of Valley Road. From there, Valley Road leads to the western side of the lake and WPC's accessible parking area, boardwalk, dock and canoe/kayak launch (look for the entrance on the left). Lake Pleasant Road continues around the eastern side of the lake and provides access to a PA Fish and Boat Commission parking area and boat launch.

**Please use caution and watch for traffic along Lake Pleasant Road.**

**Please note:** Portions of the Conservation Area are closed to the public (see map for details).

**Description:** Lake Pleasant is a 64-acre natural lake. The Conservation Area includes most of the lake's shoreline, as well as surrounding wetlands, upland forests, old fields and reclaimed gravel mines.



## LAKE PLEASANT CONSERVATION AREA



*For more information about Western Pennsylvania Conservancy, please contact:*

Western Pennsylvania Conservancy  
Northwest Regional Office  
814-346-0377; [northwest@paconserve.org](mailto:northwest@paconserve.org)

Western Pennsylvania Conservancy  
800 Waterfront Dr.  
Pittsburgh, PA 15222

866-564-6972  
[WaterLandLife.org](http://WaterLandLife.org)  
[info@paconserve.org](mailto:info@paconserve.org)



Western Pennsylvania  
Conservancy



January 2025

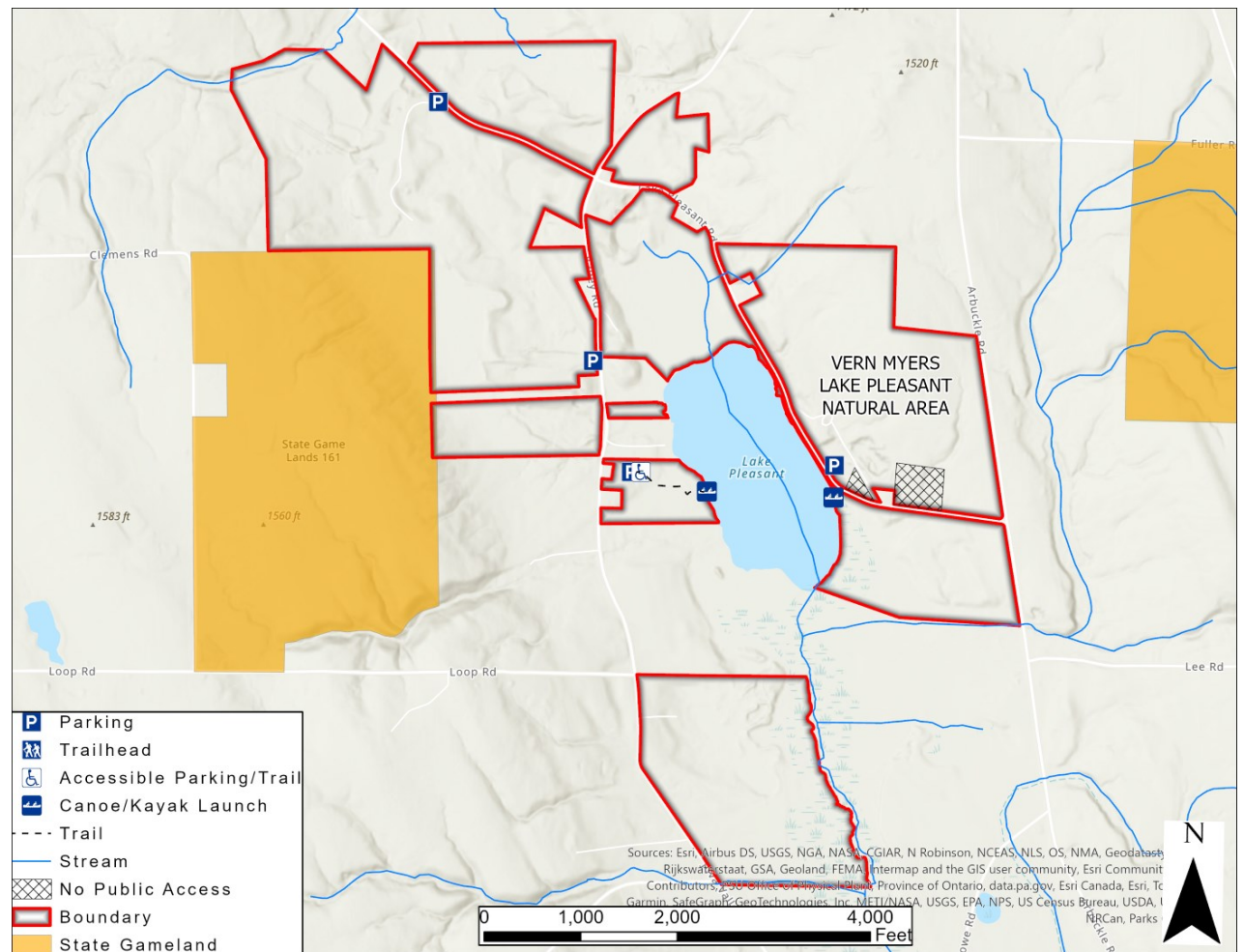


**Recreational activities: Non-motorized boat access** is available at a PA Fish and Boat Commission launch located on the eastern shoreline, off Lake Pleasant Road. An **accessible trail, boardwalk and canoe/kayak launch\*** is located along the western shoreline. *To avoid spreading invasive species, boats and other gear should be thoroughly cleaned and allowed to completely dry prior to entering the lake.*

**Wildlife watchers** can explore the many habitat types found throughout the Conservation Area. Beavers are abundant at the lake outlet and within numerous small wetlands. Bird observations have included osprey, bald eagle, common loon, American bittern, green heron, swamp sparrow, eastern bluebird and veery.

**Hunting and fishing** are permitted, though hunting is not allowed on Sundays. Please exercise caution and wear blaze orange during hunting season. Trapping is not permitted.

\* *WPC is pleased to thank the following supporters for making these accessibility improvements possible: PA Dept. of Conservation and Natural Resources, Erie County Greenways Program, Northwest Commission Greenways Block Grant Program, Christopher & Dana Reeve Foundation, and The Max and Victoria Dreyfus Foundation.*



Forming part of the headwaters of French Creek, Lake Pleasant is the finest example of a natural, glacially formed inland lake in northwest PA. The lake is recharged primarily by groundwater traveling through glacial sediments containing large amounts of limestone. This natural filtration helps maintain high water quality and provide habitat features for rare and unique plant communities. In fact, the lake and surroundings support at least nine Pennsylvania Endangered species.

193 acres of the preserve east of the lake have been designated the **Vern Myers Lake Pleasant Natural Area** in recognition of a prior landowner.

When visiting Lake Pleasant Conservation Area, please remember:

- Only non-motorized boats are permitted.
- To avoid spreading aquatic invasives, thoroughly clean and dry boats and other gear before entering the lake.
- Vehicles, including ATVs and bicycles, are prohibited.
- Camping and campfires are prohibited.
- If you carry it in, carry it out.
- Dogs must be on a leash or otherwise kept under control at all times.
- Collecting (animals, plants, rocks, etc.) without WPC permission is prohibited.