

**Location:** Worth Township, Butler County, PA.

**Size:** Approx. 32 acres

**Date acquired:** 1975

**Notable feature:** A significant geologic feature (an esker)

**Recreational activities (see inside for details):** Hiking, wildlife watching, hunting

**Directions:** Take I-79 to Exit 96 (Portersville). From the ramp, take PA-488 W for 0.5 mile to Rt. 19. Take a slight right onto Rt. 19 N, travel 0.5 mile, and turn right onto W. Park Rd. Travel 6 miles and continue straight onto W. Liberty Rd. The road will crest over a modest rise and a large red brick farmhouse will be on the left (to the north). The esker lies beyond the farmhouse to the northeast, marked by two large oaks 400 yards apart on the lower, southern slope of the esker. Continue 0.4 miles to a gravel parking area on the left.

**Please note:** The adjacent cultivated fields are not on WPC land. Please respect private property.

**Description:** Miller Esker, also known as Jacksonville Esker and West Liberty Hogback, formed during the last glaciation about 23,000 years ago. Miller Esker Natural Area currently protects over 2,000 feet of the esker, possibly the best preserved in the state.

*\*The esker is Site #8 on PA DCNR's "Trail of Geology - Glacial Lakes and Drainage Changes" (copies available at nearby Moraine State Park and at [www.dcnr.state.pa.us](http://www.dcnr.state.pa.us)).*



*For more information about the Western Pennsylvania Conservancy, please contact:*

Western Pennsylvania Conservancy  
800 Waterfront Dr.  
Pittsburgh, PA 15222

toll-free: 1-866-564-6972  
[WaterLandLife.org](http://WaterLandLife.org)  
[info@paconserve.org](mailto:info@paconserve.org)



# MILLER ESKER NATURAL AREA



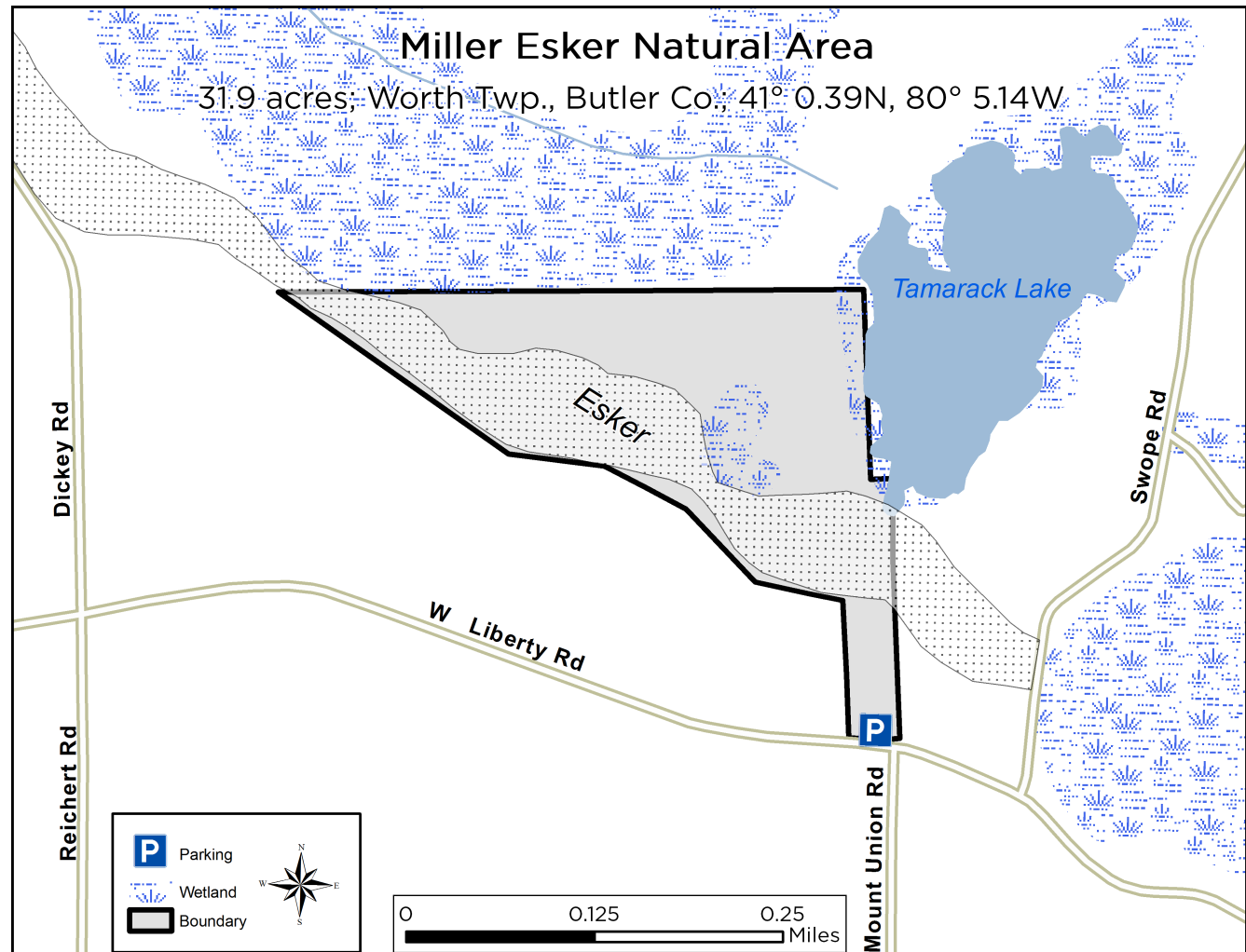
January 2025

**Recreational activities:** While there are no designated trails within the preserve, visitors are welcome to walk from the parking area to the top of the 40-foot-tall esker. Walking close to the treeline will give a sense of the esker's size and sinuosity. Returning along the base of the feature will give a sense of its mass.

**Wildlife watchers** visiting in summer should look for meadow-dependent birds, mammals and insects. The esker is mowed in late August, providing habitat for migrating or wintering birds such as American pipit, snow bunting and Lapland longspur.

**Hunting** is permitted except on Sundays. Please exercise caution and wear blaze orange during hunting season. Trapping is not permitted.

*The Western Pennsylvania Conservancy thanks the Butler County Tourism & Convention Bureau, Moraine State Park and Moraine Preservation Fund for their support in constructing the parking area.*



Eskers form when melting ice carves a river-like tunnel within a glacier. As the tunnel enlarges, the flowing water carries a significant amount of sand and gravel. As the glacier recedes, this material is deposited along the path of the tunnel, leaving behind a serpentine mound that, over thousands of years, becomes covered with soil and vegetation. Many eskers, including portions of Miller Esker outside the preserve, have been mined for the sand and gravel deposits.

When visiting Miller Esker Natural Area, please remember:

- Vehicles, including ATVs, snowmobiles, and bicycles, are prohibited.
- Camping and campfires are prohibited.
- If you carry it in, carry it out.
- Dogs must be on a leash at all times.
- Collecting (animals, plants, rocks, etc.) without permission is prohibited.