

Western Pennsylvania Conservancy



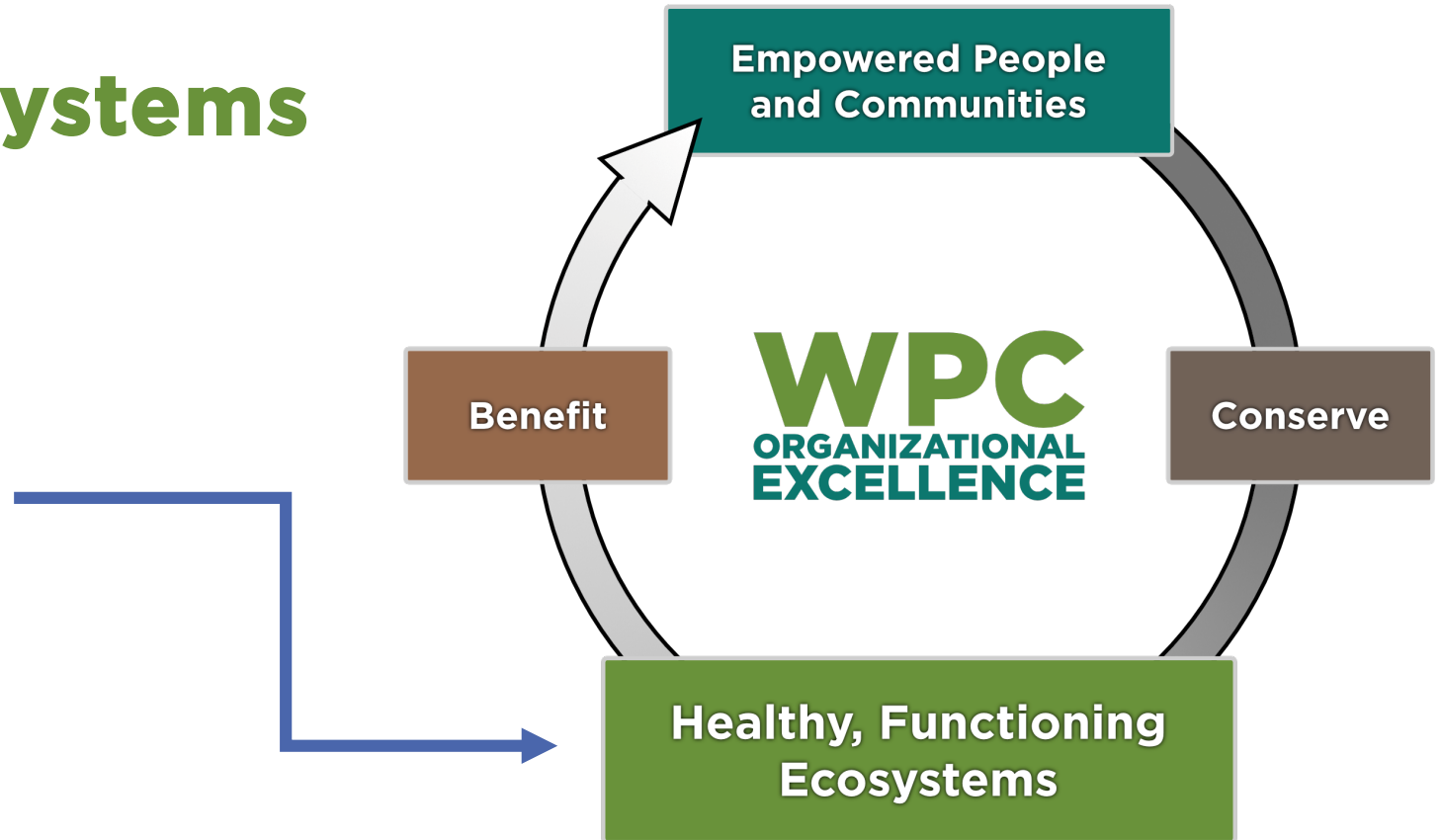
2022-2024 Strategic Plan

Nature and people thrive when individuals and communities are welcomed and empowered to participate in conservation.



Strategic Vision: Conserving Ecosystems

We will work toward protecting our region's exceptional ecological resources, including protection of key landscapes, corridors and habitats in the face of fragmentation, climate change, development and other impacts.



Conserving Ecosystems



High biodiversity landscapes and waterways, and the corridors that connect them, are documented, protected, stewarded, and monitored.

Conserving Ecosystems



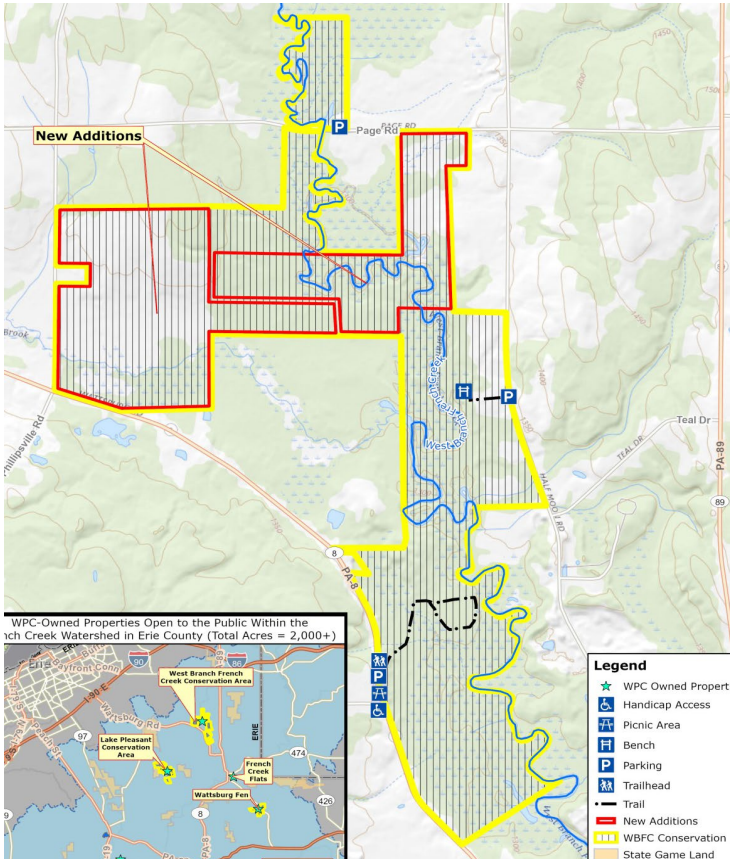
Ecosystems impacted by a long history of degradation and fragmentation are restored and functioning more naturally.

Conserving Ecosystems



The ecosystems of the region's rivers and streams are more resilient because they fish passage, more riparian buffers and improved aquatic habitat.

Conserving Ecosystems



Ecosystems on WPC preserves are more resilient through more robust ecological inventory, analysis, protection, stewardship, and monitoring.

Conserving Ecosystems



Fallingwater – its architecture, collections and landscape – is stewarded and conserved vigorously to maintain resilience and ensure long-term operational and environmental sustainability.

Strategic Vision: People and Communities

Through the commitment of our staff, volunteers, members and partners, we will collaborate with people and communities to accomplish shared conservation goals and enhance the resilience of the region's communities.



People and Communities



We acknowledge disparities and barriers to access and participation in nature, the outdoors and in community conservation. We work to enable, include and welcome all people.

People and Communities



We acknowledge and the human history of the places we work and protect, honoring and lifting up stories and contributions of under-represented and marginalized people and communities.

People and Communities



Fallingwater provides welcoming, inclusive experiences to visitors, learners, artists, scholars, volunteers and members of all backgrounds and abilities and from our local community and across the globe.

People and Communities



We work to increase the capacity of under-resourced and marginalized people and communities in cities, towns and rural areas across our region to implement community-led conservation and greening efforts, promoting healthy environments and improvement to quality of life and economic well-being.

People and Communities



WPC preserves are equipped to welcome and engage more visitors, especially students, and to respond to increased demand for and the outdoors.

People and Communities



We welcome young people and educators to participate in our work through partnerships that provide hands-on educational opportunities, nurturing appreciation for nature and inspiring young conservationists.

People and Communities



Fallingwater is a hub for innovation and creativity, inspiring people to discover and embrace architecture and design for better living through meaningful connections to nature, the arts and each other.

People and Communities



Farmers, conservation partners and WPC maintain, and protect productive farms, both rural and urban, that are resilient, demonstrate environmental stewardship, and are community-sustaining.

Strategic Vision: Organizational Excellence

We are committed to organizational excellence at WPC, investing in our staff, resources we need to do our work, and the power of collaboration across WPC. This also includes recognizing the vital role our members and volunteers play in our work.



Organizational Excellence



All employees feel welcome, appreciated, and included in the mission and strategic vision of WPC. WPC enthusiastically welcomes new employees from diverse backgrounds, values their perspectives and contributions, and provides support and opportunities for learning and professional growth.

Organizational Excellence



Robust internal communication and collaboration improves program delivery and gives employee access to a more holistic understanding of WPC's work and strategic vision.

Organizational Excellence



WPC members are welcomed, engaged and celebrated for their support, involvement and dedication, which are integral to WPC's success.

Organizational Excellence



People from all communities are welcomed and encouraged to volunteer with WPC to participate in high-quality experiences that are vital to advancing our mission.

Organizational Excellence

Virtual Experiences



Fallingwater From Home

From activities for kids and families to resources for teachers, you will enjoy these Fallingwater experiences anytime, anywhere from home.

[More >](#)



A Closer Look

"A Closer Look" is a **weekly live broadcast series** held every Wednesday through which you will gain special access to spaces, objects, stories and information that are not included on our architectural tours.

[More >](#)



Free Webinars

We offer free monthly webinars on a variety of topics related to Fallingwater to provide you with more information and insight.

[More >](#)



Virtual Summer Camps

Through this online program, high school students learn about Fallingwater and Frank Lloyd Wright's design philosophy while preparing for the college application process.

[More >](#)

Toms Run Nature Reserve Virtual Tour

An ongoing story of restoration for an urban forest in Allegheny County.

Western Pennsylvania Conservancy

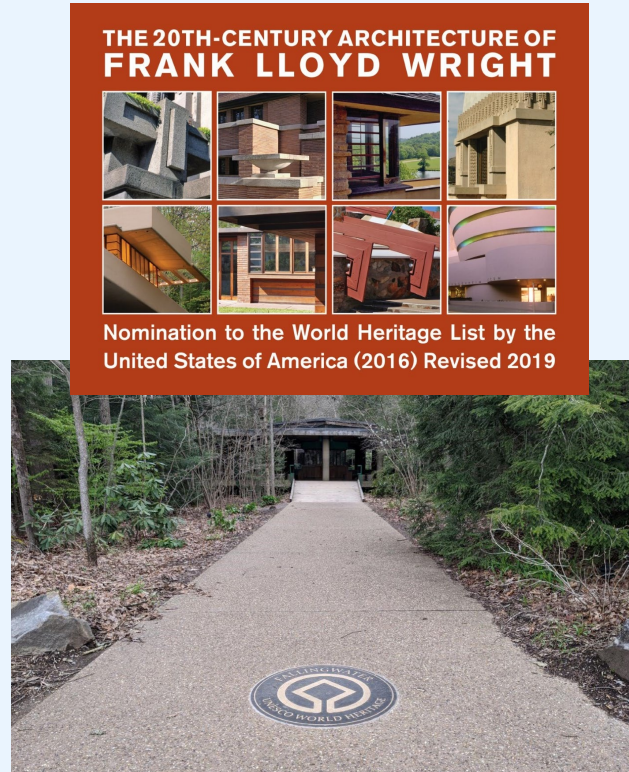
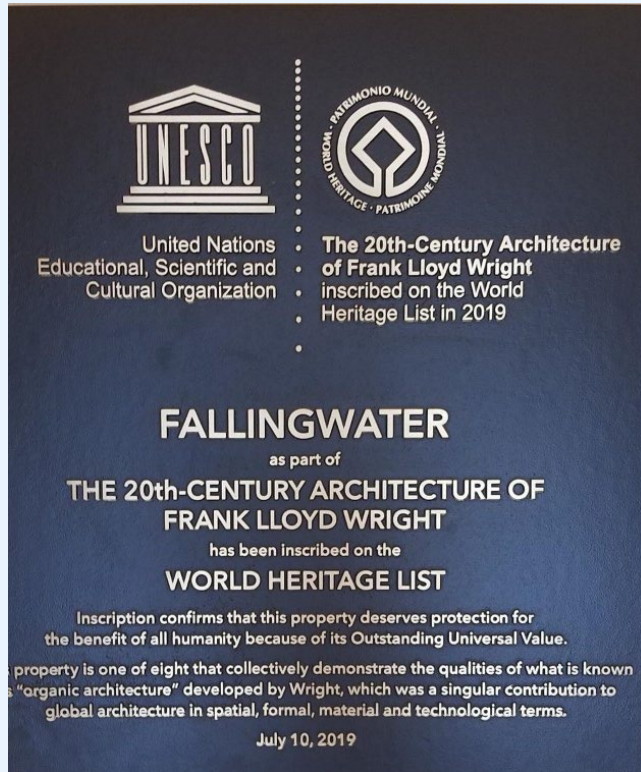
Engagement and access for people of all abilities, ages, locations and backgrounds expands through virtual programming.

Organizational Excellence



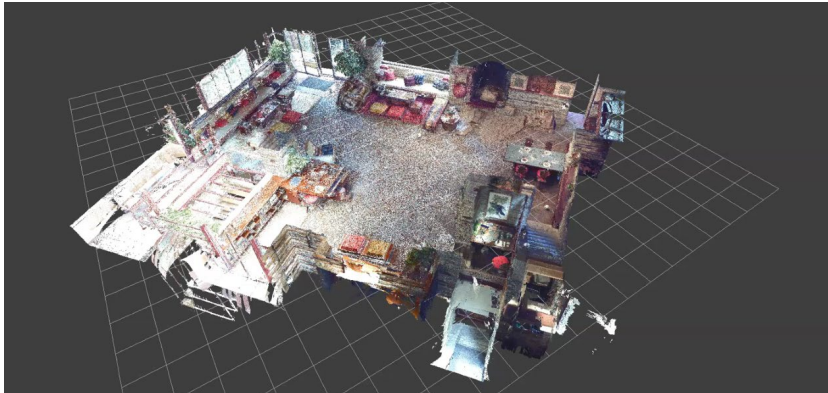
WPC implements best practices regarding operational sustainability and energy efficiency, including active efforts to minimize our carbon footprint.

Organizational Excellence



WPC implements best practices regarding operational sustainability and energy efficiency, including active efforts to minimize our carbon footprint.

Organizational Excellence



WPC is equipped with the technology strategically aligned for effectively and efficiently advancing its mission and vision.