

Location: Venango and Greenfield townships, Erie County

Dates acquired: 1996—2022

Size: Noncontiguous parcels total 1,064 acres.

Notable features: Slow-moving stream, floodplain and associated wetlands, alkaline fen, beaver ponds, hemlock forested wetland

Recreational activities (see inside for details): Hiking, wildlife watching, hunting, fishing

Directions: The primary access is along the east side of Rt. 8, near the village of Lowville, approximately 4 miles north of Wattsburg, Erie Co., PA. Other parking areas are off Philipsville Road, Page Road, Half Moon Road, and Wildman Road.

Description: The Conservation Area includes a variety of upland and wetland areas and more than 6.5 miles of frontage along the West Branch of French Creek. There are extensive areas of forested wetlands, including oxbows and old side channels, which provide important habitat for a diversity of plants and animals.



WEST BRANCH FRENCH CREEK Conservation Area



For more information about Western Pennsylvania Conservancy, please contact:

Western Pennsylvania Conservancy
Northwest Regional Office
814-346-0377; northwest@paconserve.org

Western Pennsylvania Conservancy
800 Waterfront Dr.
Pittsburgh, PA 15222

866-564-6972
waterlandlife.org



January 2025

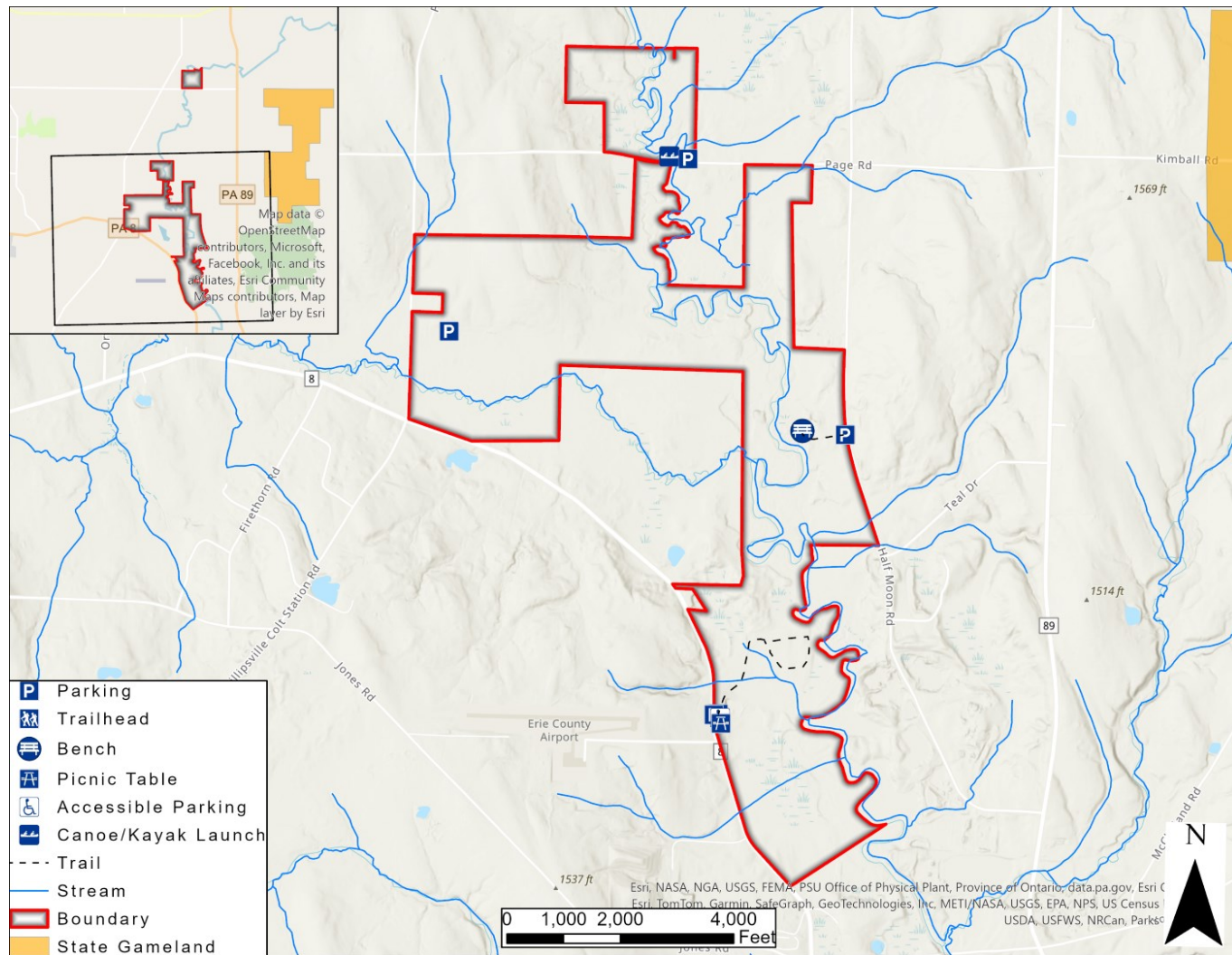


Recreational activities: From the parking area off Rt. 8, a short, paved, **accessible path** leads to a covered **pavilion** containing tables and grills. Also from the parking area, a 1.1-mile loop **hiking trail** leads north to a series of picturesque beaver ponds. A plank boardwalk, or puncheon, crosses a wetland located just below a beaver dam. The trail then turns to circle an old Christmas tree plantation, and skirts along the edge of the West Branch French Creek floodplain. Depending on the season, portions of the trail may be quite wet.

From Half Moon Road, visitors can walk along an old farm road through old fields and a reclaimed gravel mine to reach the edge of the floodplain forest. At the end of the trail, a concrete bench overlooks a small wetland.

Off Page Road, an improved **canoe launch** provides access to W. Branch French Creek.

Hunting and fishing are permitted, though hunting is not allowed on Sundays. Please exercise caution and wear blaze orange during hunting season. Trapping is not permitted.



Within the Conservation Area is a unique shrub-fen community known as **Lowville Fen**. Fens are permanent wetlands fed by calcium-rich groundwater that support species requiring a high pH. As fen ecosystems are rare in Pennsylvania, and limited to the glaciated northwestern region, they contain many rare plant species endemic to these areas. These species include highbush-cranberry, alder-leaved buckthorn, leafy northern green orchid, slender cotton-grass, and mud sedge.

When visiting the West Branch French Creek Conservation Area, please remember:

- Only foot-traffic is permitted.
- Camping and campfires are prohibited.
- If you carry it in, carry it out.
- Dogs must be on a leash or otherwise kept under control at all times.
- Collecting (animals, plants, rocks, etc.) without permission is prohibited.