



## Help Guide for Map Of Our Work

[Welcome](#) | [Terms of Use](#) | [Instructions](#) | [Data Descriptions](#)

### Welcome & Contact

Welcome to the help guide for the Western Pennsylvania Conservancy's project map. The data represented on the map is from the Conservancy's extensive Geographic Information System (GIS). The application will allow you to see WPC's work throughout Western Pennsylvania and customize a map for your use. This application is constantly updated with new WPC projects. By connecting to the data in this manner, you will always have the most recent data. If you have technical difficulties, please contact the GIS Manager at [gis@paconserve.org](mailto:gis@paconserve.org)

### Terms of Use/Disclaimer

The Western Pennsylvania Conservancy provides this information with the understanding that it is not guaranteed to be accurate, correct or complete. Conclusions drawn from this information are the responsibility of the user. Every effort has been made to ensure the accuracy, correctness and timeliness of the materials presented. However, the Conservancy assumes no responsibility in the event that any information is incorrect. WPC assumes no liability for damages incurred directly or indirectly as a result of incomplete, incorrect or omitted information. The user of this information assumes all liability for their dependence on this information and assumes responsibility for the information.

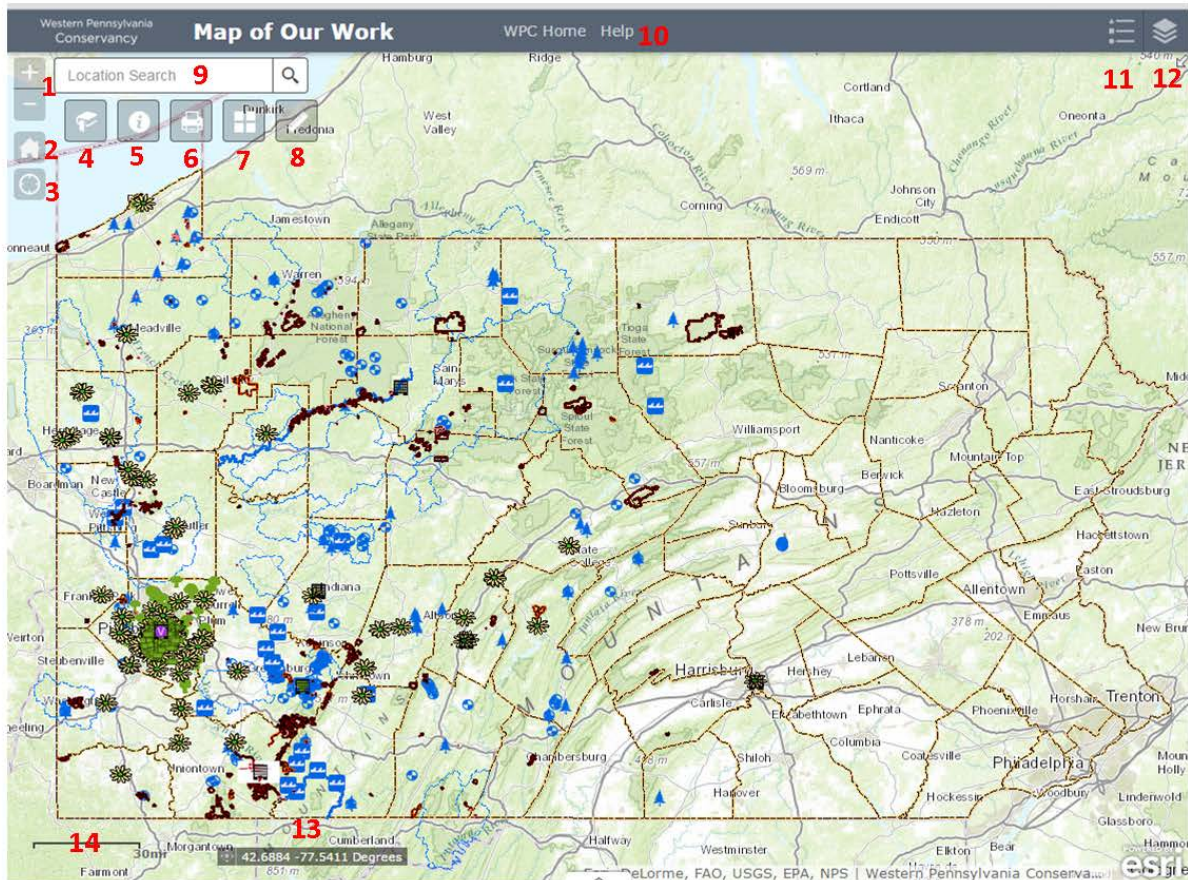
By entering this website you acknowledge that this site and the information and data contained therein are provided "as is" without warranty or any representation of accuracy, timeliness or completeness. You agree to hold the Conservancy harmless from any claims that may be made because of reliance on this website.

WPC strives to have this map available twenty-four hours a day, however due to server maintenance, the Conservancy does not guarantee their availability.

### Instructions

1. In an internet browser on you computer, tablet, or smart phone (Chrome, Internet Explorer, Safari, etc), go to the WPC Maps of Our Work page <http://www.waterlandlife.org/map>
2. Click on the Map of Our Work
3. Read and agree to the Terms of Use; the application will then launch.
4. The map application allows you many options to view Conservancy projects. The graphic below shows the various functions available to you.





1. Zoom
2. Zoom To Pennsylvania
3. Turn on GPS
4. Bookmarks
5. Information
6. Print
7. Choose Basemap
8. Measure
9. Location Search
10. Links
11. Legend
12. Layers

## Common Mapping Functions


Western Pennsylvania Conservancy


Task	How-To
Zoom	+ - buttons in top left OR Scroll mouse wheel OR Pinch motion with finger
Pan	Click and hold and drag OR Tap & hold, then move finger
Identify	Click/tap on a WPC feature; use the arrow to scan through multiple features
Print a Map	Click the print icon at the top; tap Print; a PDF map link will be displayed tap to open/save
Change Basemap	Click the basemap icon in the upper left, choose
Bookmark	Click the bookmark icon at the top, choose a defined bookmark or make your own
Measure	Click/tap Measure tool, click area or length or location, click on the map to measure

## Dataset Descriptions & Terminology

The Western Pennsylvania Conservancy protects and restores exceptional places to provide our region with clean waters and healthy forests, wildlife and natural areas for the benefit of present and future generations. The Conservancy creates green spaces and gardens, contributing to the vitality of our cities and towns, and preserves Fallingwater, a symbol of people living in harmony with nature. These conservation efforts are displayed spatially on the mapping application. Here is a brief description of the datasets you are viewing.

### **WPC Information**


 [Offices](#): WPC currently has seven offices. This point layer shows where they are located and how to contact them.


 [Volunteer Opportunities](#): Looking to give back? WPC has many chances to work on trails, plant gardens and a variety of other projects. This point layer shows where, when and who.


 [Fallingwater](#): Location of Frank Lloyd Wright's masterpiece Fallingwater.

### **Community Gardens & Greenspace**


The Western Pennsylvania Conservancy's Community Gardens and Greenspace Program implements a variety of greening strategies throughout the region, partnering with neighbors, funders and volunteers to ensure healthier environments for all to enjoy.

 [Gardens](#): Planted each spring, WPC's community gardens have become a signature feature of our region, captivating residents and visitors throughout the growing season. Corporate and organizational sponsorships and the work of more than 13,000 volunteers from neighborhoods, schools, businesses and organizations have made it possible for communities in 20 counties to more than 130 gardens. This point represents the location of the garden.


 [Hanging Baskets](#): The Conservancy hangs more than 750 flower baskets across Pittsburgh through the summer months.


 [Planters](#): Initially planned as a birthday gift to the city of Pittsburgh for its 250th celebration, more than 600 large planters accent main pedestrian corridors downtown. The Colcom Foundation first proposed this "bouquet of flowers" for the city in 2008; since then, the foundation has renewed the project to enhance the experience for everyone who lives, works or visits downtown. Additional organizations provide support for planters throughout downtown as well.

 [School Grounds Greening](#): The School Grounds Greening Project brings children closer to nature by enhancing the grounds of Pittsburgh Public Schools with plantings and outdoor green spaces.

 [TreeVitalize](#): Working in partnership with community groups, non-profits and municipal agencies, TreeVitalize Pittsburgh accomplished an initial goal to plant 20,000



 [River Trails](#): This line layer contains river trail maps that were created by the WPC's Watershed Conservation Program.

 [Watershed Plans](#): A key tool for any watershed-based conservation effort, Watershed Conservation Plans are essential to the careful planning of your project. This polygon layers show the area for each plan and a link to the plan itself.